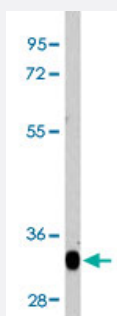


LIN28 monoclonal antibody, clone 55CT58.12.1

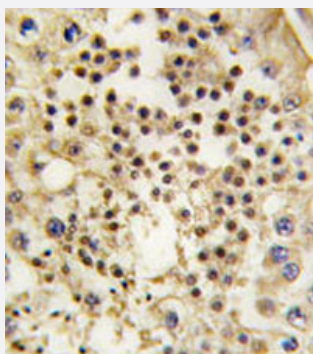
Catalog # MAB12278 Size 400 uL

Applications



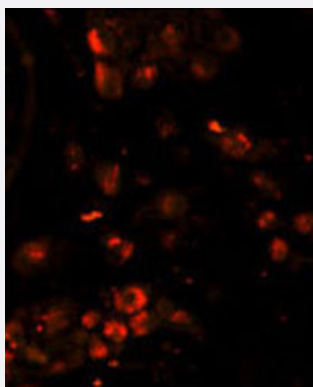
Western Blot (Recombinant protein)

Western blot analysis of LIN28 recombinant protein reacted with LIN28 monoclonal antibody (Cat # MAB12278) at 1:200-1:2000 dilution.



Immunohistochemistry (Formalin/PFA-fixed paraffin-embedded sections)

Immunohistochemical staining of formalin-fixed and paraffin-embedded human testis tissue reacted with LIN28 monoclonal antibody (Cat # MAB12278) at 1:50-1:200 dilution.



Immunofluorescence

Immunofluorescent staining of paraffin-embedded human testis tissue reacted with LIN28 monoclonal antibody (Cat # MAB12278) at 1:10-1:50 dilution.

Specification

Product Description

Mouse monoclonal antibody raised against human LIN28.

Immunogen	Recombinant protein corresponding to human LIN28.
Host	Mouse
Reactivity	Human
Form	Liquid
Purification	Ammonium sulfate precipitation
Isotype	IgG1, Kappa
Recommend Usage	Immunohistochemistry (1:50-1:200) Immunofluorescence (1:10-1:50) Western Blot (1:200-1:2000) The optimal working dilution should be determined by the end user.
Storage Buffer	In PBS (0.09% sodium azide)
Storage Instruction	Store at 4°C. For long term storage store at -20°C. Aliquot to avoid repeated freezing and thawing.
Note	This product contains sodium azide: a POISONOUS AND HAZARDOUS SUBSTANCE which should be handled by trained staff only.

Applications

- Western Blot (Recombinant protein)

Western blot analysis of LIN28 recombinant protein reacted with LIN28 monoclonal antibody (Cat # MAB12278) at 1:200-1:2000 dilution.

- Immunohistochemistry (Formalin/PFA-fixed paraffin-embedded sections)

Immunohistochemical staining of formalin-fixed and paraffin-embedded human testis tissue reacted with LIN28 monoclonal antibody (Cat # MAB12278) at 1:50-1:200 dilution.

- Immunofluorescence

Immunofluorescent staining of paraffin-embedded human testis tissue reacted with LIN28 monoclonal antibody (Cat # MAB12278) at 1:10-1:50 dilution.

Gene Info — LIN28

Entrez GeneID [79727](#)

Gene Name LIN28

Gene Alias	CSDD1, FLJ12457, LIN-28, LIN28A, ZCCHC1
Gene Description	lin-28 homolog (C. elegans)
Omim ID	611043
Gene Ontology	Hyperlink
Gene Summary	CCHC domain containing 1
Other Designations	OTTHUMP00000003663 RNA-binding protein LIN-28 lin-28 homolog zinc finger, CCHC domain c ontaining 1