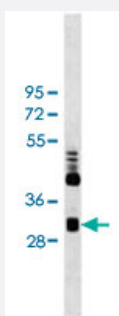


CLIC4 monoclonal antibody, clone 17CT9.2.8

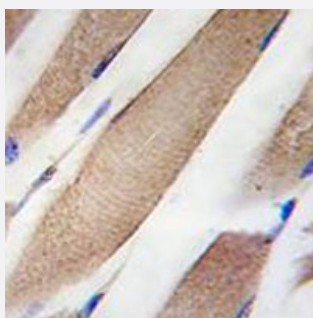
Catalog # MAB12277 Size 100 uL

Applications



Western Blot (Cell lysate)

Western blot analysis of Hela cell line lysates reacted with CLIC4 monoclonal antibody (Cat # MAB12277) at 1:2000 dilution.



Immunohistochemistry (Formalin/PFA-fixed paraffin-embedded sections)

Immunohistochemical staining of formalin-fixed and paraffin-embedded human skeletal muscle tissue reacted with CLIC4 monoclonal antibody (Cat # MAB12277) at 1:50-1:100 dilution.

Specification

Product Description	Mouse monoclonal antibody raised against human CLIC4.
Immunogen	Recombinant His fusion protein corresponding to human CLIC4.
Host	Mouse
Reactivity	Human
Form	Liquid
Isotype	IgG1, kappa

Recommend Usage	Immunohistochemistry (1:50-1:100) Western Blot (1:2000) The optimal working dilution should be determined by the end user.
Storage Buffer	In ascites (0.09% sodium azide)
Storage Instruction	Store at 4°C. For long term storage store at -20°C. Aliquot to avoid repeated freezing and thawing.
Note	This product contains sodium azide: a POISONOUS AND HAZARDOUS SUBSTANCE which should be handled by trained staff only.

Applications

- Western Blot (Cell lysate)

Western blot analysis of HeLa cell line lysates reacted with CLIC4 monoclonal antibody (Cat # MAB12277) at 1:2000 dilution.

- Immunohistochemistry (Formalin/PFA-fixed paraffin-embedded sections)

Immunohistochemical staining of formalin-fixed and paraffin-embedded human skeletal muscle tissue reacted with CLIC4 monoclonal antibody (Cat # MAB12277) at 1:50-1:100 dilution.

Gene Info — CLIC4

Entrez GeneID	25932
Gene Name	CLIC4
Gene Alias	CLIC4L, DKFZp566G223, FLJ38640, H1, MTCLIC, huH1, p64H1
Gene Description	chloride intracellular channel 4
Omim ID	606536
Gene Ontology	Hyperlink
Gene Summary	Chloride channels are a diverse group of proteins that regulate fundamental cellular processes including stabilization of cell membrane potential, transepithelial transport, maintenance of intracellular pH, and regulation of cell volume. Chloride intracellular channel 4 (CLIC4) protein, encoded by the CLIC4 gene, is a member of the p64 family; the gene is expressed in many tissues and exhibits an intracellular vesicular pattern in Panc-1 cells (pancreatic cancer cells). [provided by RefSeq]
Other Designations	OTTHUMP00000003380 chloride intracellular channel 4 like

Disease

- [Tobacco Use Disorder](#)