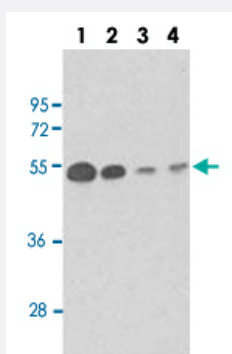


TUBB1 monoclonal antibody, clone 86CT4.4.4

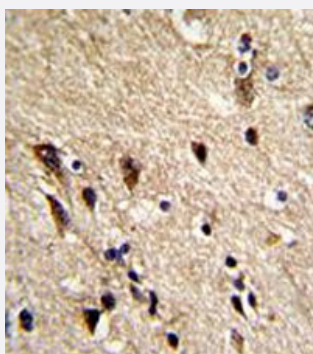
Catalog # MAB12274 Size 400 uL

Applications



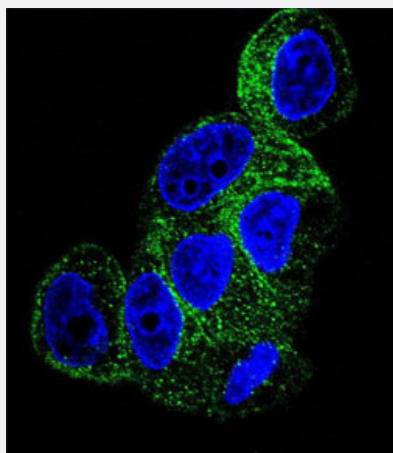
Western Blot

Western blot analysis of Lane 1: mouse brain tissue lysates Lane 2: Y79 whole cell lysates Lane 3: CEM whole cell lysates Lane 4: 293 whole cell lysates reacted with TUBB1 monoclonal antibody (Cat # MAB12274) at 1:100-1:500 dilution.



Immunohistochemistry (Formalin/PFA-fixed paraffin-embedded sections)

Immunohistochemical staining of formalin-fixed and paraffin-embedded human brain reacted with TUBB1 monoclonal antibody (Cat # MAB12274) at 1:10-1:50 dilution.



Immunofluorescence

Immunofluorescent staining of HepG2 cell reacted with TUBB1 monoclonal antibody (Cat # MAB12274) at 1:10-1:50 dilution.

Specification

Product Description	Mouse monoclonal antibody raised against human TUBB1.
Immunogen	Recombinant protein corresponding to human TUBB1.
Host	Mouse
Reactivity	Human, Mouse
Form	Liquid
Purification	Protein G purification
Isotype	IgG1
Recommend Usage	Immunohistochemistry (1:10-1:50) Immunofluorescence (1:10-1:50) Western Blot (1:100-1:500) The optimal working dilution should be determined by the end user.
Storage Buffer	In PBS (0.09% sodium azide)
Storage Instruction	Store at 4°C. For long term storage store at -20°C. Aliquot to avoid repeated freezing and thawing.
Note	This product contains sodium azide: a POISONOUS AND HAZARDOUS SUBSTANCE which should be handled by trained staff only.

Applications

- Western Blot

Western blot analysis of Lane 1: mouse brain tissue lysates Lane 2: Y79 whole cell lysates Lane 3: CEM whole cell lysates Lane 4: 293 whole cell lysates reacted with TUBB1 monoclonal antibody (Cat # MAB12274) at 1:100-1:500 dilution.

- Immunohistochemistry (Formalin/PFA-fixed paraffin-embedded sections)

Immunohistochemical staining of formalin-fixed and paraffin-embedded human brain reacted with TUBB1 monoclonal antibody (Cat # MAB12274) at 1:10-1:50 dilution.

- Immunofluorescence

Immunofluorescent staining of HepG2 cell reacted with TUBB1 monoclonal antibody (Cat # MAB12274) at 1:10-1:50 dilution.

Gene Info — TUBB1

Entrez GeneID

[81027](#)

Gene Name	TUBB1
Gene Alias	dJ543J19.4
Gene Description	tubulin, beta 1
Gene Ontology	Hyperlink
Gene Summary	Microtubules are involved in a wide variety of cellular processes, including mitosis, morphogenesis, platelet formation, and mobility of cilia and flagella. Circulating platelets carry a single marginal microtubule coil that is wound in 8 to 12 turns and is responsible for platelet shape. TUBB1 is the major beta-tubulin expressed in platelets and megakaryocytes and is required for optimal platelet assembly (Wang et al., 1986 [PubMed 3782288]; Schulze et al., 2004 [PubMed 15315966]).[supplied by OMIM]
Other Designations	OTTHUMP00000031411 beta tubulin 1, class VI

Pathway

- [Gap junction](#)
- [Pathogenic Escherichia coli infection - EHEC](#)

Disease

- [Cardiovascular Diseases](#)
- [Genetic Predisposition to Disease](#)
- [Hemorrhagic Disorders](#)
- [Myocardial Infarction](#)
- [Thrombocytopenia](#)
- [Thrombosis](#)