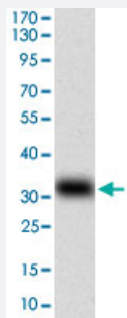


# MSTN monoclonal antibody, clone 6E4E6

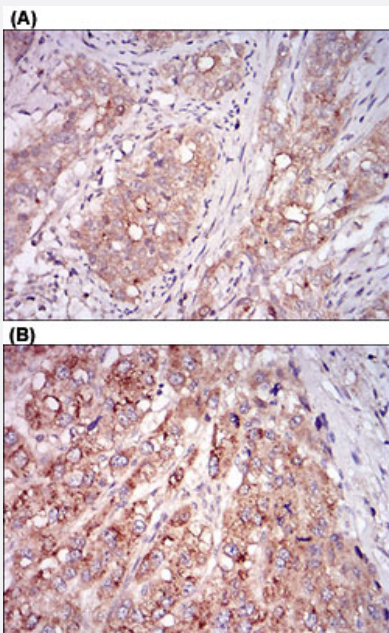
Catalog # MAB12259      Size 100 ug

## Applications



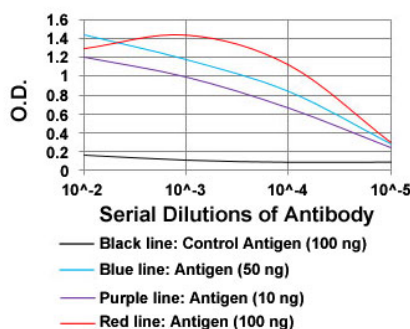
### Western Blot (Recombinant protein)

Western blot analysis of human MSTN (AA:24-266) recombinant protein (Expected MW is 28.9 kDa) with MSTN monoclonal antibody, clone 6E4E6 (Cat# MAB12259) at 1:500-1:2000 dilution.



### Immunohistochemistry (Formalin/PFA-fixed paraffin-embedded sections)

Immunohistochemical staining of human cervical cancer tissues (A) and liver cancer tissues (B) with MSTN monoclonal antibody, clone 6E4E6 (Cat# MAB12259) at 1:200-1:1000 dilution.



### Enzyme-linked Immunoabsorbent Assay

ELISA analysis of MSTN monoclonal antibody, clone 6E4E6 (Cat# MAB12259) at 1:10000 dilution.

## Specification

<b>Product Description</b>	Mouse monoclonal antibody raised against partial recombinant human MSTN.
<b>Immunogen</b>	Recombinant protein corresponding to amino acids 24-266 of human MSTN.
<b>Host</b>	Mouse
<b>Theoretical MW (kDa)</b>	42.8
<b>Reactivity</b>	Human
<b>Form</b>	Liquid
<b>Isotype</b>	IgG2b
<b>Recommend Usage</b>	ELISA (1:10000) Immunohistochemistry (1:200-1:1000) Western Blot (1:500-1:2000) The optimal working dilution should be determined by the end user.
<b>Storage Buffer</b>	In PBS (0.05% sodium azide)
<b>Storage Instruction</b>	Store at 4°C. For long term storage store at -20°C. Aliquot to avoid repeated freezing and thawing.
<b>Note</b>	This product contains sodium azide: a POISONOUS AND HAZARDOUS SUBSTANCE which should be handled by trained staff only.

## Applications

- Western Blot (Recombinant protein)

Western blot analysis of human MSTN (AA:24-266) recombinant protein (Expected MW is 28.9 kDa) with MSTN monoclonal antibody, clone 6E4E6 (Cat# MAB12259) at 1:500-1:2000 dilution.

- Immunohistochemistry (Formalin/PFA-fixed paraffin-embedded sections)

Immunohistochemical staining of human cervical cancer tissues (A) and liver cancer tissues (B) with MSTN monoclonal antibody, clone 6E4E6 (Cat# MAB12259) at 1:200-1:1000 dilution.

- Enzyme-linked Immunoabsorbent Assay

ELISA analysis of MSTN monoclonal antibody, clone 6E4E6 (Cat# MAB12259) at 1:10000 dilution.

## Gene Info — MSTN

**Entrez GeneID** [2660](#)**Gene Name** MSTN**Gene Alias** GDF8**Gene Description** myostatin**Omim ID** [601788](#)**Gene Ontology** [Hyperlink](#)

**Gene Summary** The protein encoded by this gene is a member of the bone morphogenetic protein (BMP) family and the TGF-beta superfamily. This group of proteins is characterized by a polybasic proteolytic processing site which is cleaved to produce a mature protein containing seven conserved cysteine residues. The members of this family are regulators of cell growth and differentiation in both embryonic and adult tissues. This gene is thought to encode a secreted protein which negatively regulates skeletal muscle growth. [provided by RefSeq]

**Other Designations** growth differentiation factor 8

## Disease

- [Genetic Predisposition to Disease](#)
- [Muscle Weakness](#)
- [Muscular Atrophy](#)
- [Obesity](#)
- [Ovarian Failure](#)
- [Polycystic Ovary Syndrome](#)
- [Puberty](#)
- [Thrombophilia](#)
- [Tobacco Use Disorder](#)