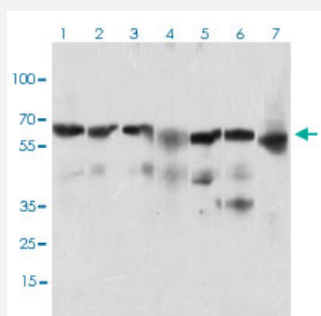


BACE1 monoclonal antibody, clone 3C1C3

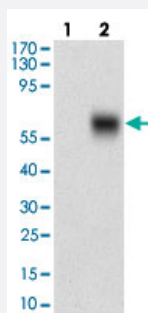
Catalog # MAB12256 Size 100 ug

Applications



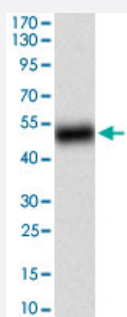
Western Blot (Cell lysate)

Western blot analysis of Lane 1: HeLa cell lysate; Lane 2: SK-N-SH cell lysate; Lane 3: HepG2 cell lysate; Lane 4: C6 cell lysate; Lane 5: PC-12 cell lysate; Lane 6: PANC-1 cell lysate; Lane 7: NIH/3T3 cell lysate with BACE1 monoclonal antibody, clone 3C1C3 (Cat# MAB12256) at 1:500-1:2000 dilution.



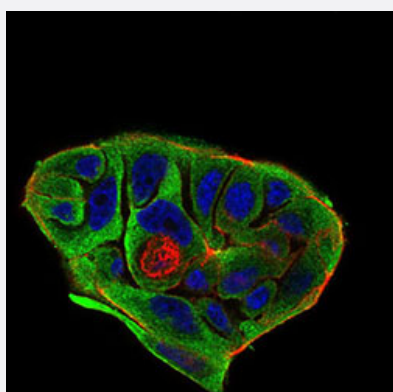
Western Blot (Transfected lysate)

Western blot analysis of Lane 1: Negative control [HEK293 cell lysate]; Lane 2: Over-expression lysate [BACE1 (AA: 112-324)-hlgGfc transfected HEK293 cells] with BACE1 monoclonal antibody, clone 3C1C3 (Cat# MAB12256) at 1:500-1:2000 dilution.



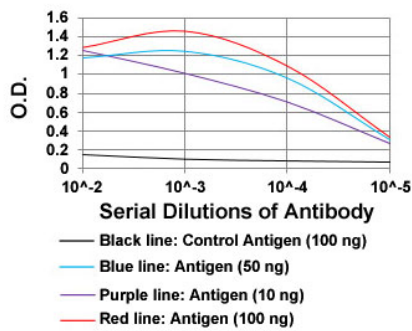
Western Blot (Recombinant protein)

Western blot analysis of human BACE1 (AA: 112-324) recombinant protein (Expected MW is 49.9 kDa) with BACE1 monoclonal antibody, clone 3C1C3 (Cat# MAB12256) at 1:500-1:2000 dilution.



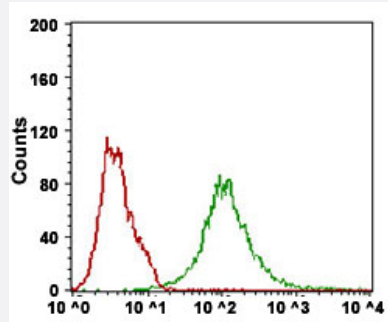
Immunofluorescence

Immunofluorescent staining of MCF-7 cells with BACE1 monoclonal antibody, clone 3C1C3 (Cat# MAB12256) at 1:200-1:1000 dilution.



Enzyme-linked Immunoabsorbent Assay

ELISA analysis of BACE1 monoclonal antibody, clone 3C1C3 (Cat# MAB12256) at 1:10000 dilution.



Flow Cytometry

Flow cytometric analysis of Hela cells with BACE1 monoclonal antibody, clone 3C1C3 (Cat# MAB12256) at 1:200-1:400 dilution (Green) and negative control (Red).

Specification

Product Description Mouse monoclonal antibody raised against partial recombinant human BACE1.

Immunogen Recombinant protein corresponding to amino acids 112-324 of human BACE1.

Host Mouse

Theoretical MW (kDa) 55.7

Reactivity Human, Mouse, Rat

Form Liquid

Isotype IgG1

Recommend Usage

- ELISA (1:10000)
- Flow Cytometry (1:200-1:400)
- Immunofluorescence (1:200-1:1000)
- Western Blot (1:500-1:2000)
- The optimal working dilution should be determined by the end user.

Storage Buffer In PBS (0.05% sodium azide)

Storage Instruction

- Store at 4°C. For long term storage store at -20°C.
- Aliquot to avoid repeated freezing and thawing.

Note

This product contains sodium azide: a POISONOUS AND HAZARDOUS SUBSTANCE which should be handled by trained staff only.

Applications

- Western Blot (Cell lysate)

Western blot analysis of Lane 1: Hela cell lysate; Lane 2: SK-N-SH cell lysate; Lane 3: HepG2 cell lysate; Lane 4: C6 cell lysate; Lane 5: PC-12 cell lysate; Lane 6: PANC-1 cell lysate; Lane 7: NIH/3T3 cell lysate with BACE1 monoclonal antibody, clone 3C1C3 (Cat# MAB12256) at 1:500-1:2000 dilution.

- Western Blot (Transfected lysate)

Western blot analysis of Lane 1: Negative control [HEK293 cell lysate]; Lane 2: Over-expression lysate [BACE1 (AA: 112-324)-hlgGfc transfected HEK293 cells] with BACE1 monoclonal antibody, clone 3C1C3 (Cat# MAB12256) at 1:500-1:2000 dilution.

- Western Blot (Recombinant protein)

Western blot analysis of human BACE1 (AA: 112-324) recombinant protein (Expected MW is 49.9 kDa) with BACE1 monoclonal antibody, clone 3C1C3 (Cat# MAB12256) at 1:500-1:2000 dilution.

- Immunofluorescence

Immunofluorescent staining of MCF-7 cells with BACE1 monoclonal antibody, clone 3C1C3 (Cat# MAB12256) at 1:200-1:1000 dilution.

- Enzyme-linked Immunoabsorbent Assay

ELISA analysis of BACE1 monoclonal antibody, clone 3C1C3 (Cat# MAB12256) at 1:10000 dilution.

- Flow Cytometry

Flow cytometric analysis of Hela cells with BACE1 monoclonal antibody, clone 3C1C3 (Cat# MAB12256) at 1:200-1:400 dilution (Green) and negative control (Red).

Gene Info — BACE1

Entrez GeneID	23621
---------------	-----------------------

Gene Name	BACE1
-----------	-------

Gene Alias	ASP2, BACE, FLJ90568, HSPC104, KIAA1149
------------	---

Gene Description	beta-site APP-cleaving enzyme 1
------------------	---------------------------------

Omim ID	604252
---------	------------------------

Gene Ontology	Hyperlink
---------------	---------------------------

Gene Summary

Cerebral deposition of amyloid beta peptide is an early and critical feature of Alzheimer's disease. Amyloid beta peptide is generated by proteolytic cleavage of amyloid precursor protein (APP) by two proteases, one of which is the protein encoded by this gene. The encoded protein, a member of the peptidase A1 protein family, is a type I integral membrane glycoprotein and aspartic protease that is found mainly in the Golgi. Four transcript variants encoding different isoforms have been described for this gene. [provided by RefSeq]

Other Designations

APP beta-secretase|aspartyl protease 2|beta-secretase|beta-site amyloid beta A4 precursor protein-cleaving enzyme|beta-site amyloid precursor protein cleaving enzyme|memapsin-2|membrane-associated aspartic protease 2|transmembrane aspartic proteinase Asp2

Disease

- [Alzheimer disease](#)
- [Amnesia](#)
- [Cardiovascular Diseases](#)
- [Cognition](#)
- [Cognition Disorders](#)
- [Diabetes Complications](#)
- [Genetic Predisposition to Disease](#)
- [Metabolic Syndrome X](#)
- [Neoplasms](#)
- [Neuropsychological Tests](#)
- [Osteoporosis](#)