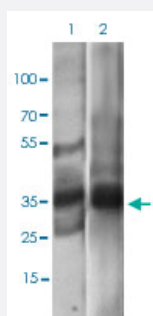


EPCAM monoclonal antibody, clone 7B5C10

Catalog # MAB12251

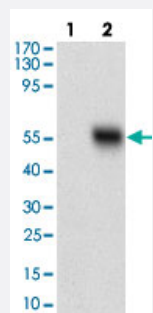
Size 100 ug

Applications



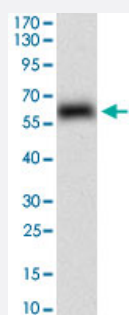
Western Blot (Cell lysate)

Western blot analysis of Lane 1: A431 cell lysate; Lane 2: MCF-7 cell lysate with EPCAM monoclonal antibody, clone 7B5C10 (Cat# MAB12251) at 1:500-1:2000 dilution.



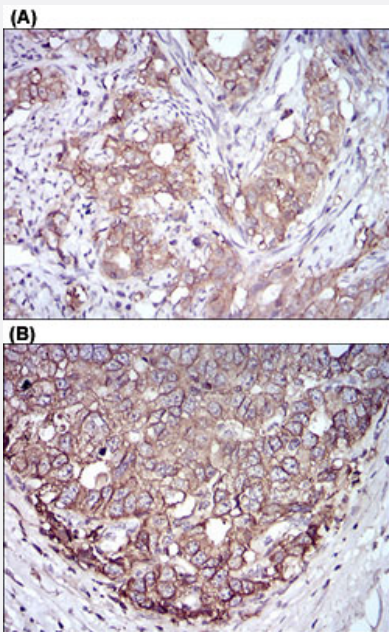
Western Blot (Transfected lysate)

Western blot analysis of Lane 1: Negative control [HEK293 cell lysate]; Lane 2: Over-expression lysate [EPCAM (AA: 24-265)-hlgGfc transfected HEK293 cells] with EPCAM monoclonal antibody, clone 7B5C10 (Cat# MAB12251) at 1:500-1:2000 dilution.



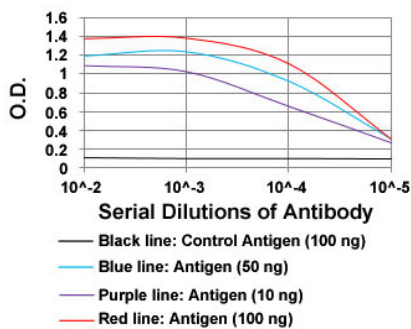
Western Blot (Recombinant protein)

Western blot analysis of human EPCAM (AA: 24-265) recombinant protein (Expected MW is 53.4 kDa) with EPCAM monoclonal antibody, clone 7B5C10 (Cat# MAB12251) at 1:500-1:2000 dilution.



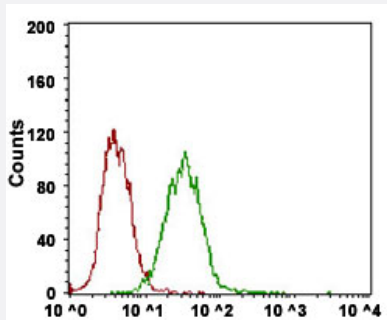
Immunohistochemistry (Formalin/PFA-fixed paraffin-embedded sections)

Immunohistochemical staining of human cervical cancer tissues (A) and esophageal cancer tissues (B) with EPCAM monoclonal antibody, clone 7B5C10 (Cat# MAB12251) at 1:200-1:1000 dilution.



Enzyme-linked Immunoabsorbent Assay

ELISA analysis of EPCAM monoclonal antibody, clone 7B5C10 (Cat# MAB12251) at 1:10000 dilution.



Flow Cytometry

Flow cytometric analysis of A431 cells with EPCAM monoclonal antibody, clone 7B5C10 (Cat# MAB12251) at 1:200-1:400 dilution (Green) and negative control (Red).

Specification

Product Description	Mouse monoclonal antibody raised against partial recombinant human EPCAM.
Immunogen	Recombinant protein corresponding to amino acids 24-265 of human EPCAM.
Host	Mouse
Theoretical MW (kDa)	35

Reactivity	Human
Form	Liquid
Isotype	IgG1
Recommend Usage	ELISA (1:10000) Flow Cytometry (1:200-1:400) Immunohistochemistry (1:200-1:1000) Western Blot (1:500-1:2000) The optimal working dilution should be determined by the end user.
Storage Buffer	In PBS (0.05% sodium azide)
Storage Instruction	Store at 4°C. For long term storage store at -20°C. Aliquot to avoid repeated freezing and thawing.
Note	This product contains sodium azide: a POISONOUS AND HAZARDOUS SUBSTANCE which should be handled by trained staff only.

Applications

- Western Blot (Cell lysate)

Western blot analysis of Lane 1: A431 cell lysate; Lane 2: MCF-7 cell lysate with EPCAM monoclonal antibody, clone 7B5C10 (Cat# MAB12251) at 1:500-1:2000 dilution.

- Western Blot (Transfected lysate)

Western blot analysis of Lane 1: Negative control [HEK293 cell lysate]; Lane 2: Over-expression lysate [EPCAM (AA: 24-265)-hlgGfc transfected HEK293 cells] with EPCAM monoclonal antibody, clone 7B5C10 (Cat# MAB12251) at 1:500-1:2000 dilution.

- Western Blot (Recombinant protein)

Western blot analysis of human EPCAM (AA: 24-265) recombinant protein (Expected MW is 53.4 kDa) with EPCAM monoclonal antibody, clone 7B5C10 (Cat# MAB12251) at 1:500-1:2000 dilution.

- Immunohistochemistry (Formalin/PFA-fixed paraffin-embedded sections)

Immunohistochemical staining of human cervical cancer tissues (A) and esophageal cancer tissues (B) with EPCAM monoclonal antibody, clone 7B5C10 (Cat# MAB12251) at 1:200-1:1000 dilution.

- Enzyme-linked Immunoabsorbent Assay

ELISA analysis of EPCAM monoclonal antibody, clone 7B5C10 (Cat# MAB12251) at 1:10000 dilution.

- Flow Cytometry

Flow cytometric analysis of A431 cells with EPCAM monoclonal antibody, clone 7B5C10 (Cat# MAB12251) at 1:200-1:400 dilution (Green) and negative control (Red).

Gene Info — EPCAM

Entrez GeneID	4072
Gene Name	EPCAM
Gene Alias	17-1A, 323/A3, CD326, CO-17A, CO17-1A, EGP, EGP-2, EGP34, EGP40, ESA, Ep-CAM, GA733-2, HEA125, KS1/4, KSA, M4S1, MH99, MIC18, MK-1, MOC31, TACST-1, TACSTD1, TROP1, hEGP-2
Gene Description	epithelial cell adhesion molecule
Omim ID	185535
Gene Ontology	Hyperlink
Gene Summary	This gene encodes a carcinoma-associated antigen and is a member of a family that includes at least two type I membrane proteins. This antigen is expressed on most normal epithelial cells and gastrointestinal carcinomas and functions as a homotypic calcium-independent cell adhesion molecule. The antigen is being used as a target for immunotherapy treatment of human carcinomas. Mutations in this gene result in congenital tufting enteropathy. [provided by RefSeq]
Other Designations	adenocarcinoma-associated antigen carcinoma-associated antigen GA733-2 human epithelial glycoprotein-2 membrane component, chromosome 4, surface marker (35kD glycoprotein) tumor-associated calcium signal transducer 1

Disease

- [Genetic Predisposition to Disease](#)
- [Ovarian Neoplasms](#)