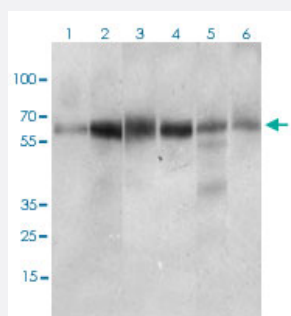


CTNNBL1 monoclonal antibody, clone 1E4F5

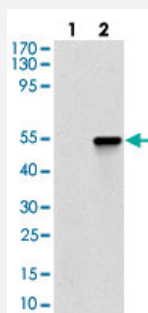
Catalog # MAB12247 Size 100 ug

Applications



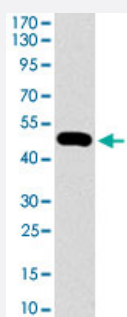
Western Blot (Cell lysate)

Western blot analysis of Lane 1: Hela cell lysate; Lane 2: Jurkat cell lysate; Lane 3: HEK293 cell lysate; Lane 4: A431 cell lysate; Lane 5: HepG2 cell lysate; Lane 6: RAJI cell lysate with CTNNBL1 monoclonal antibody, clone 1E4F5 (Cat# MAB12247) at 1:500-1:2000 dilution.



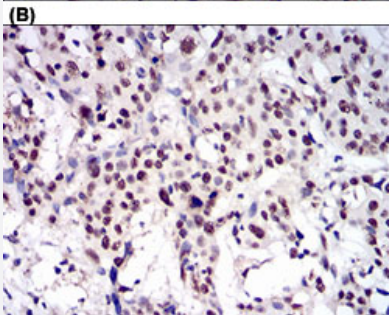
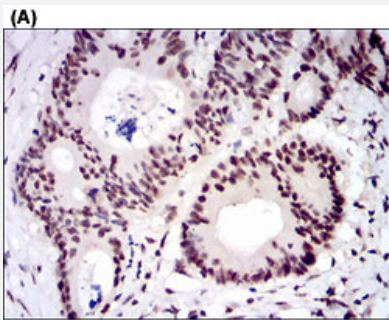
Western Blot (Transfected lysate)

Western blot analysis of Lane 1: Negative control [HEK293 cell lysate]; Lane 2: Over-expression lysate [CTNNBL1 (AA: 390-557)-hlgGfc transfected HEK293 cells] with CTNNBL1 monoclonal antibody, clone 1E4F5 (Cat# MAB12247) at 1:500-1:2000 dilution.



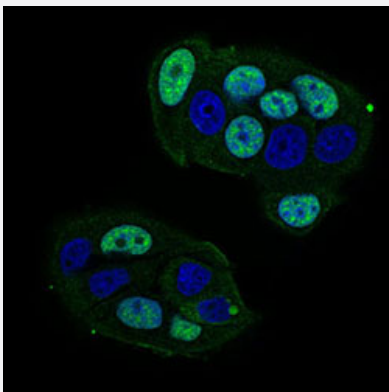
Western Blot (Recombinant protein)

Western blot analysis of human CTNNBL1 (AA: 390-557) recombinant protein (Expected MW is 45.8 kDa) with CTNNBL1 monoclonal antibody, clone 1E4F5 (Cat# MAB12247) at 1:500-1:2000 dilution.



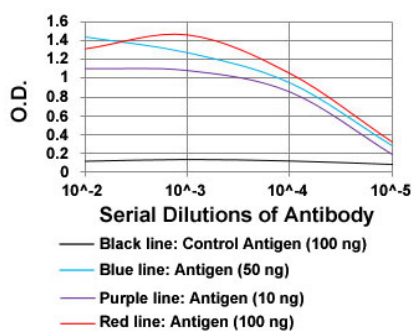
Immunohistochemistry (Formalin/PFA-fixed paraffin-embedded sections)

Immunohistochemical staining of human colon cancer tissues (A) and esophageal cancer tissues (B) with CTNNBL1 monoclonal antibody, clone 1E4F5 (Cat# MAB12247) at 1:200-1:1000 dilution.



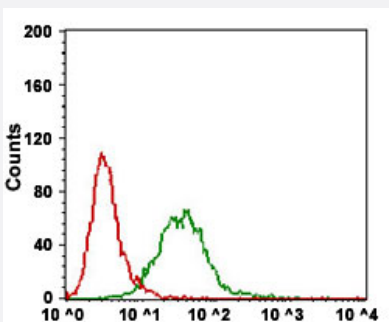
Immunofluorescence

Immunofluorescent staining of MCF-7 cells with CTNNBL1 monoclonal antibody, clone 1E4F5 (Cat# MAB12247) at 1:200-1:1000 dilution.



Enzyme-linked Immunoabsorbent Assay

ELISA analysis of CTNNBL1 monoclonal antibody, clone 1E4F5 (Cat# MAB12247) at 1:10000 dilution.



Flow Cytometry

Flow cytometric analysis of Hela cells with CTNNBL1 monoclonal antibody, clone 1E4F5 (Cat# MAB12247) at 1:200-1:400 dilution (Green) and negative control (Red).

Specification

Product Description	Mouse monoclonal antibody raised against partial recombinant human CTNNBL1.
Immunogen	Recombinant protein corresponding to amino acids 390-557 of human CTNNBL1.
Host	Mouse
Theoretical MW (kDa)	65.2
Reactivity	Human
Form	Liquid
Isotype	IgG1
Recommend Usage	ELISA (1:10000) Flow Cytometry (1:200-1:400) Immunofluorescence (1:200-1:1000) Immunohistochemistry (1:200-1:1000) Western Blot (1:500-1:2000) The optimal working dilution should be determined by the end user.
Storage Buffer	In PBS (0.05% sodium azide)
Storage Instruction	Store at 4°C. For long term storage store at -20°C. Aliquot to avoid repeated freezing and thawing.
Note	This product contains sodium azide: a POISONOUS AND HAZARDOUS SUBSTANCE which should be handled by trained staff only.

Applications

- Western Blot (Cell lysate)

Western blot analysis of Lane 1: Hela cell lysate; Lane 2: Jurkat cell lysate; Lane 3: HEK293 cell lysate; Lane 4: A431 cell lysate; Lane 5: HepG2 cell lysate; Lane 6: RAJI cell lysate with CTNNBL1 monoclonal antibody, clone 1E4F5 (Cat# MAB12247) at 1:500-1:2000 dilution.

- Western Blot (Transfected lysate)

Western blot analysis of Lane 1: Negative control [HEK293 cell lysate]; Lane 2: Over-expression lysate [CTNNBL1 (AA: 390-557)-hlgGfc transfected HEK293 cells] with CTNNBL1 monoclonal antibody, clone 1E4F5 (Cat# MAB12247) at 1:500-1:2000 dilution.

- Western Blot (Recombinant protein)

Western blot analysis of human CTNNBL1 (AA: 390-557) recombinant protein (Expected MW is 45.8 kDa) with CTNNBL1 monoclonal antibody, clone 1E4F5 (Cat# MAB12247) at 1:500-1:2000 dilution.

- Immunohistochemistry (Formalin/PFA-fixed paraffin-embedded sections)

Immunohistochemical staining of human colon cancer tissues (A) and esophageal cancer tissues (B) with CTNNBL1 monoclonal antibody, clone 1E4F5 (Cat# MAB12247) at 1:200-1:1000 dilution.

- Immunofluorescence

Immunofluorescent staining of MCF-7 cells with CTNNBL1 monoclonal antibody, clone 1E4F5 (Cat# MAB12247) at 1:200-1:1000 dilution.

- Enzyme-linked Immunoabsorbent Assay

ELISA analysis of CTNNBL1 monoclonal antibody, clone 1E4F5 (Cat# MAB12247) at 1:10000 dilution.

- Flow Cytometry

Flow cytometric analysis of Hela cells with CTNNBL1 monoclonal antibody, clone 1E4F5 (Cat# MAB12247) at 1:200-1:400 dilution (Green) and negative control (Red).

Gene Info — CTNNBL1

Entrez GeneID [56259](#)

Gene Name CTNNBL1

Gene Alias C20orf33, FLJ21108, NAP, NYD-SP19, P14L, PP8304, dJ633O20.1

Gene Description catenin, beta like 1

Omim ID [611537](#)

Gene Ontology [Hyperlink](#)

Gene Summary The protein encoded by this gene contains an acidic domain, a putative bipartite nuclear localization signal, a nuclear export signal, a leucine-isoleucine zipper, and phosphorylation motifs. In addition, the encoded protein contains Armadillo/beta-catenin-like repeats, which have been implicated in protein-protein interactions. Although the function of this protein has not been determined, the C-terminal portion of the protein has been shown to possess apoptosis-inducing activity. [provided by RefSeq]

Other Designations beta catenin-like 1|nuclear associated protein

Disease

- [Asthma](#)
- [Birth Weight](#)
- [Cardiovascular Diseases](#)
- [Diabetes Mellitus](#)
- [Genetic Predisposition to Disease](#)
- [Obesity](#)
- [Tobacco Use Disorder](#)