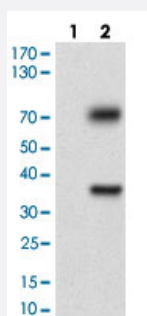


TUBE1 monoclonal antibody, clone 7G3B2

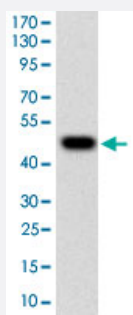
Catalog # MAB12240 Size 100 ug

Applications



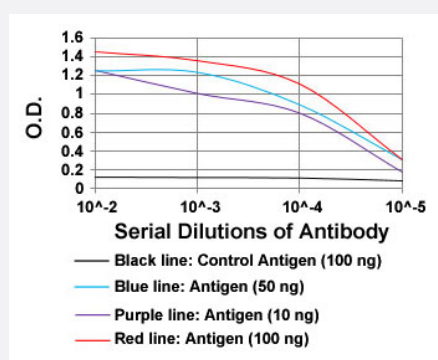
Western Blot (Transfected lysate)

Western blot analysis of Lane 1: Negative control [HEK293 cell lysate]; Lane 2: Over-expression lysate [TUBE1 (AA: 314-472)-hlgGfc transfected HEK293 cells] with TUBE1 monoclonal antibody, clone 7G3B2 (Cat# MAB12240) at 1:500-1:2000 dilution.



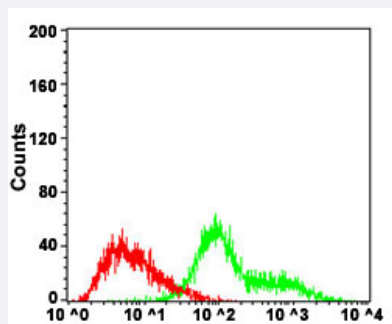
Western Blot (Recombinant protein)

Western blot analysis of human TUBE1 (AA: 314-472) recombinant protein (Expected MW is 44.3 kDa) with TUBE1 monoclonal antibody, clone 7G3B2 (Cat# MAB12240) at 1:500-1:2000 dilution.



Enzyme-linked Immunoabsorbent Assay

ELISA analysis of TUBE1 monoclonal antibody, clone 7G3B2 (Cat# MAB12240) at 1:10000 dilution.



Flow Cytometry

Flow cytometric analysis of Hela cells with TUBE1 monoclonal antibody, clone 7G3B2 (Cat# MAB12240) at 1:200-1:400 dilution (Green) and negative control (Red).

Specification

Product Description	Mouse monoclonal antibody raised against partial recombinant human TUBE1.
Immunogen	Recombinant protein corresponding to amino acids 314-472 of human TUBE1.
Host	Mouse
Theoretical MW (kDa)	53
Reactivity	Human
Form	Liquid
Isotype	IgG1
Recommend Usage	ELISA (1:10000) Flow Cytometry (1:200-1:400) Western Blot (1:500-1:2000) The optimal working dilution should be determined by the end user.
Storage Buffer	In PBS (0.05% sodium azide)
Storage Instruction	Store at 4°C. For long term storage store at -20°C. Aliquot to avoid repeated freezing and thawing.
Note	This product contains sodium azide: a POISONOUS AND HAZARDOUS SUBSTANCE which should be handled by trained staff only.

Applications

- Western Blot (Transfected lysate)

Western blot analysis of Lane 1: Negative control [HEK293 cell lysate]; Lane 2: Over-expression lysate [TUBE1 (AA: 314-472)-hlgGfC transfected HEK293 cells] with TUBE1 monoclonal antibody, clone 7G3B2 (Cat# MAB12240) at 1:500-1:2000 dilution.

- Western Blot (Recombinant protein)

Western blot analysis of human TUBE1 (AA: 314-472) recombinant protein (Expected MW is 44.3 kDa) with TUBE1 monoclonal antibody, clone 7G3B2 (Cat# MAB12240) at 1:500-1:2000 dilution.

- Enzyme-linked Immunoabsorbent Assay

ELISA analysis of TUBE1 monoclonal antibody, clone 7G3B2 (Cat# MAB12240) at 1:10000 dilution.

- Flow Cytometry

Flow cytometric analysis of Hela cells with TUBE1 monoclonal antibody, clone 7G3B2 (Cat# MAB12240) at 1:200-1:400 dilution (Green) and negative control (Red).

Gene Info — TUBE1

Entrez GeneID	51175
---------------	-----------------------

Gene Name	TUBE1
-----------	-------

Gene Alias	FLJ22589, TUBE, dJ142L7.2
------------	---------------------------

Gene Description	tubulin, epsilon 1
------------------	--------------------

Omim ID	607345
---------	------------------------

Gene Ontology	Hyperlink
---------------	---------------------------

Gene Summary	This gene encodes a member of the tubulin superfamily. This protein localizes to the centriolar sub-distal appendages that are associated with the older of the two centrioles after centrosome duplication. This protein plays a central role in organization of the microtubules during centriole duplication. A pseudogene of this gene is found on chromosome 5
--------------	---

Other Designations	OTTHUMP00000017033 OTTHUMP00000040425 epsilon-tubulin
--------------------	---