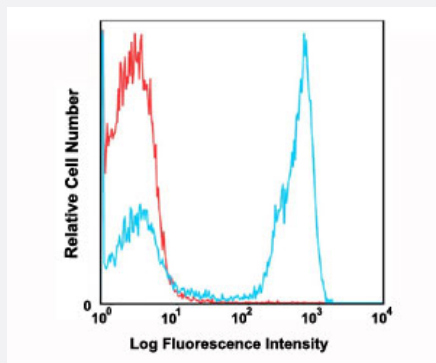


Ptpcr monoclonal antibody, clone RA3-6B2 (PE)

Catalog # MAB12229 Size 100 ug

Applications



Flow Cytometry

Flow cytometric analysis of C57Bl/6 mouse splenocytes using Ptpcr monoclonal antibody, clone RA3-6B2 (PE) (Cat # MAB12229) compared to a relevant isotype control in red.

Specification

Product Description	Rat monoclonal antibody raised against Ptpcr.
Immunogen	Abelson murine leukemia virus-induced pre-B tumor cells.
Host	Rat
Reactivity	Human, Mouse
Form	Liquid
Conjugation	PE
Purification	Affinity Chromatography
Isotype	IgG2a, kappa
Recommend Usage	Flow Cytometry The optimal working dilution should be determined by the end user.
Storage Buffer	In PBS, pH7.2 (0.09% Sodium azide, may contain carrier protein/stabilizer).
Storage Instruction	Store in the dark at 4°C. Avoid prolonged exposure to light. Do not freeze.

Note

This product contains sodium azide: a POISONOUS AND HAZARDOUS SUBSTANCE which should be handled by trained staff only.

Applications

- Flow Cytometry

Flow cytometric analysis of C57Bl/6 mouse splenocytes using Ptprc monoclonal antibody, clone RA3-6B2 (PE) (Cat # MAB12229) compared to a relevant isotype control in red.

Gene Info — Ptprc

Entrez GeneID	19264
---------------	-----------------------

Gene Name	Ptprc
-----------	-------

Gene Alias	B220, CD45R, Cd45, Ly-5, Lyl-4, T200, loc
------------	---

Gene Description	protein tyrosine phosphatase, receptor type, C
------------------	--

Gene Ontology	Hyperlink
---------------	---------------------------

Gene Summary	receptor type
--------------	---------------

Other Designations	lymphocyte common antigen
--------------------	---------------------------