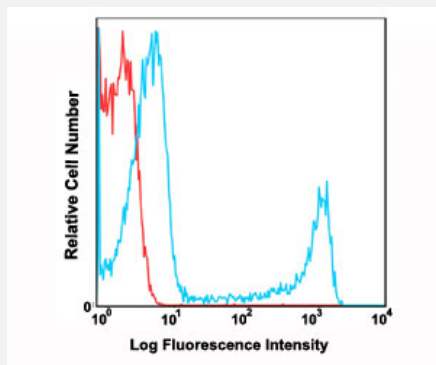


# CD8A monoclonal antibody, clone RPA-T8 (APC)

Catalog # MAB12212      Size 100 Reactions

## Applications



### Flow Cytometry

Flow cytometric analysis of human peripheral blood lymphocytes using CD8A monoclonal antibody, clone RPA-T8 (APC) (Cat # MAB12212) compared to a relevant isotype control in red.

## Specification

Product Description	Mouse monoclonal antibody raised against CD8A.
Immunogen	CD8A
Host	Mouse
Reactivity	Human
Form	Liquid
Conjugation	APC
Purification	Affinity Chromatography
Isotype	IgG1, kappa
Recommend Usage	Flow Cytometry The optimal working dilution should be determined by the end user.
Storage Buffer	In PBS, pH7.2 (0.09% Sodium azide, may contain carrier protein/stabilizer).
Storage Instruction	Store in the dark at 4°C. Avoid prolonged exposure to light. Do not freeze.

## Note

This product contains sodium azide: a POISONOUS AND HAZARDOUS SUBSTANCE which should be handled by trained staff only.

## Applications

- Flow Cytometry

Flow cytometric analysis of human peripheral blood lymphocytes using CD8A monoclonal antibody, clone RPA-T8 (APC) (Cat # MAB12212) compared to a relevant isotype control in red.

## Gene Info — CD8A

Entrez GeneID [925](#)

Gene Name CD8A

Gene Alias CD8, Leu2, MAL, p32

Gene Description CD8a molecule

Omim ID [186910 608957](#)

Gene Ontology [Hyperlink](#)

**Gene Summary** The CD8 antigen is a cell surface glycoprotein found on most cytotoxic T lymphocytes that mediates efficient cell-cell interactions within the immune system. The CD8 antigen acts as a coreceptor with the T-cell receptor on the T lymphocyte to recognize antigens displayed by an antigen presenting cell (APC) in the context of class I MHC molecules. The coreceptor functions as either a homodimer composed of two alpha chains, or as a heterodimer composed of one alpha and one beta chain. Both alpha and beta chains share significant homology to immunoglobulin variable light chains. This gene encodes the CD8 alpha chain isoforms. Multiple transcript variants encoding different isoforms have been found for this gene. [provided by RefSeq]

**Other Designations** CD8 antigen alpha polypeptide|CD8 antigen, alpha polypeptide (p32)|Leu2 T-lymphocyte antigen|OKT8 T-cell antigen|T cell co-receptor|T-cell antigen Leu2|T-cell surface glycoprotein CD8 alpha chain|T-lymphocyte differentiation antigen T8/Leu-2|T8 T-cell ant

## Pathway

- [Antigen processing and presentation](#)
- [Cell adhesion molecules \(CAMs\)](#)
- [Hematopoietic cell lineage](#)

- [Primary immunodeficiency](#)
- [T cell receptor signaling pathway](#)