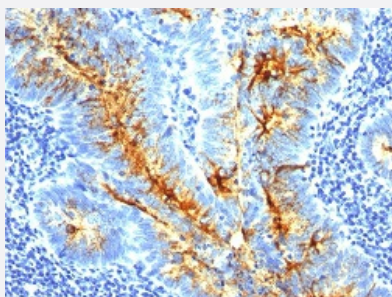


DSG1 monoclonal antibody, clone CC49

Catalog # MAB12146 Size 100 ug

Applications



Immunohistochemistry (Formalin/PFA-fixed paraffin-embedded sections)

Immunohistochemical staining of human colon cancer stained with DSG1 monoclonal antibody, clone CC49 (Cat # MAB12146).

Specification

Product Description	Mouse monoclonal antibody raised against human DSG1.
Immunogen	Purified human DSG1 protein.
Host	Mouse
Theoretical MW (kDa)	220
Reactivity	Human, Rat
Form	Liquid
Purification	Protein A/G purification
Isotype	IgG1, kappa
Recommend Usage	Immunohistochemistry (0.5-1 ug/mL) Western blot (0.5-1 ug/mL) The optimal working dilution should be determined by the end user.
Storage Buffer	In PBS (0.05% BSA, 0.05% sodium azide).

Storage Instruction

Store at 4°C.
Aliquot to avoid repeated freezing and thawing.

Note

This product contains sodium azide: a POISONOUS AND HAZARDOUS SUBSTANCE which should be handled by trained staff only.

Applications

- Western Blot
- Immunohistochemistry (Formalin/PFA-fixed paraffin-embedded sections)
Immunohistochemical staining of human colon cancer stained with DSG1 monoclonal antibody, clone CC49 (Cat # MAB12146).

Gene Info — DSG1

Entrez GeneID[1828](#)**Gene Name**

DSG1

Gene Alias

CDHF4, DG1, DSG

Gene Description

desmoglein 1

Omim ID[125670 148700](#)**Gene Ontology**[Hyperlink](#)**Gene Summary**

Desmosomes are cell-cell junctions between epithelial, myocardial and certain other cell types. Desmoglein 1 is a calcium-binding transmembrane glycoprotein component of desmosomes in vertebrate epithelial cells. Currently, three desmoglein subfamily members have been identified and all are members of the cadherin cell adhesion molecule superfamily. These desmoglein gene family members are located in a cluster on chromosome 18. The protein encoded by this gene has been identified as the autoantigen of the autoimmune skin blistering disease pemphigus foliaceus. [provided by RefSeq]

Other Designations

desmosomal glycoprotein 1|pemphigus foliaceus antigen

Disease

- [Pemphigus](#)