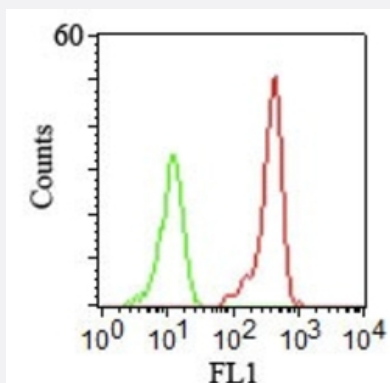


CD46 monoclonal antibody, clone 122.2

Catalog # MAB12137 Size 100 ug

Applications



Flow Cytometry

Surface staining of human PBMCs using CD46 monoclonal antibody, clone 122.2 (Cat # MAB12137).

Specification

Product Description Mouse monoclonal antibody raised against recombinant human CD46.

Immunogen Recombinant protein corresponding to human CD46.

Host Mouse

Theoretical MW (kDa) 56-66

Reactivity Human

Form Liquid

Purification Protein A/G purification

Isotype IgG1, kappa

Recommend Usage
Flow Cytometry
Immunohistochemistry (0.5-1 ug/mL)
Western blot (0.5-1 ug/mL)
The optimal working dilution should be determined by the end user.

Storage Buffer In PBS (0.05% BSA, 0.05% sodium azide).

Storage Instruction

Store at 4°C.
Aliquot to avoid repeated freezing and thawing.

Note

This product contains sodium azide: a POISONOUS AND HAZARDOUS SUBSTANCE which should be handled by trained staff only.

Applications

- Western Blot
- Immunohistochemistry (Formalin/PFA-fixed paraffin-embedded sections)
- Flow Cytometry

Surface staining of human PBMCs using CD46 monoclonal antibody, clone 122.2 (Cat # MAB12137).

Gene Info — CD46

Entrez GeneID[4179](#)**Protein Accession#**[P15529](#)**Gene Name**

CD46

Gene Alias

MCP, MGC26544, MIC10, TLX, TRA2.10

Gene Description

CD46 molecule, complement regulatory protein

Omim ID[120920 235400](#)**Gene Ontology**[Hyperlink](#)**Gene Summary**

The protein encoded by this gene is a type I membrane protein and is a regulatory part of the complement system. The encoded protein has cofactor activity for inactivation of complement components C3b and C4b by serum factor I, which protects the host cell from damage by complement. In addition, the encoded protein can act as a receptor for the Edmonston strain of measles virus, human herpesvirus-6, and type IV pili of pathogenic *Neisseria*. Finally, the protein encoded by this gene may be involved in the fusion of the spermatozoa with the oocyte during fertilization. This gene is found in a cluster on chromosome 1q32 with other genes encoding structural components of the complement system. At least fourteen different transcript variants encoding fourteen different isoforms have been found for this gene. [provided by RefSeq]

Other Designations

CD46 antigen, complement regulatory protein|OTTHUMP00000034577|OTTHUMP00000034622|OTTHUMP00000034623|OTTHUMP00000034624|OTTHUMP00000034625|OTTHUMP00000034626|OTTHUMP00000034706|antigen identified by monoclonal antibody TRA-2-10|complement membrane cofactor

Pathway

- [Complement and coagulation cascades](#)

Disease

- [Abortion](#)
- [Birth Weight](#)
- [Genetic Predisposition to Disease](#)
- [Glioblastoma](#)
- [Glioma](#)
- [Hemolytic-Uremic Syndrome](#)
- [Leukemia](#)
- [Lymphoma](#)
- [Macular Degeneration](#)
- [Meningeal Neoplasms](#)
- [Meningioma](#)
- [Recurrence](#)