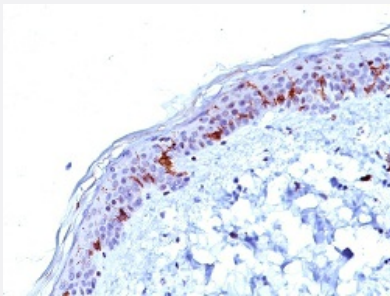


# CD1A monoclonal antibody, clone C1A/711

Catalog # MAB12124      Size 100 ug

## Applications



### Immunohistochemistry (Formalin/PFA-fixed paraffin-embedded sections)

Immunohistochemical staining of human skin with CD1A monoclonal antibody, clone C1A/711 (Cat # MAB12124).

## Specification

**Product Description** Mouse monoclonal antibody raised against recombinant human CD1A.

**Immunogen** Recombinant protein corresponding to human CD1A.

**Host** Mouse

**Theoretical MW (kDa)** 49

**Reactivity** Human

**Form** Liquid

**Purification** Protein A/G purification

**Isotype** IgG1, kappa

**Recommend Usage**  
Immunohistochemistry (0.5-1 ug/mL)  
Western blot (0.5-1 ug/mL)  
The optimal working dilution should be determined by the end user.

**Storage Buffer** In PBS (0.05% BSA, 0.05% sodium azide).

**Storage Instruction**

Store at 4°C.  
Aliquot to avoid repeated freezing and thawing.

**Note**

This product contains sodium azide: a POISONOUS AND HAZARDOUS SUBSTANCE which should be handled by trained staff only.

## Applications

- Western Blot
- Immunohistochemistry (Formalin/PFA-fixed paraffin-embedded sections)  
Immunohistochemical staining of human skin with CD1A monoclonal antibody, clone C1A/711 (Cat # MAB12124).

## Gene Info — CD1A

**Entrez GeneID**[909](#)**Protein Accession#**[P06126](#)**Gene Name**

CD1A

**Gene Alias**

CD1, FCB6, HTA1, R4, T6

**Gene Description**

CD1a molecule

**Omim ID**[188370](#)**Gene Ontology**[Hyperlink](#)**Gene Summary**

This gene encodes a member of the CD1 family of transmembrane glycoproteins, which are structurally related to the major histocompatibility complex (MHC) proteins and form heterodimers with beta-2-microglobulin. The CD1 proteins mediate the presentation of primarily lipid and glycolipid antigens of self or microbial origin to T cells. The human genome contains five CD1 family genes organized in a cluster on chromosome 1. The CD1 family members are thought to differ in their cellular localization and specificity for particular lipid ligands. The protein encoded by this gene localizes to the plasma membrane and to recycling vesicles of the early endocytic system. Alternatively spliced transcript variants have been observed, but their biological validity has not been determined. [provided by RefSeq]

**Other Designations**

CD1A antigen|CD1A antigen, a polypeptide|OTTHUMP00000018907|T-cell surface antigen T6/Lu-6|T-cell surface glycoprotein CD1a|cluster of differentiation 1 A|cortical thymocyte antigen CD1A|differentiation antigen CD1-alpha-3|epidermal dendritic cell marker

## Pathway

- [Hematopoietic cell lineage](#)

## Disease

- [Campylobacter Infections](#)
- [Genetic Predisposition to Disease](#)
- [Guillain-Barre Syndrome](#)
- [Lung Diseases](#)
- [Mycobacterium Infections](#)
- [Polyradiculoneuropathy](#)