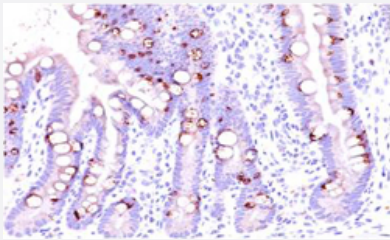


MUC2 monoclonal antibody, clone SPM296

Catalog # MAB12113 Size 100 ug

Applications



Immunohistochemistry (Formalin/PFA-fixed paraffin-embedded sections)

Immunohistochemical staining of human intestine with MUC2 monoclonal antibody, clone SPM296 (Cat # MAB12113).

Specification

Product Description Mouse monoclonal antibody raised against synthetic peptide of MUC2.

Immunogen A synthetic peptide of 29 amino acids corresponding to human MUC2.

Sequence KYPTTTPISTTTMTPTPTPTGTQTPTTT

Host Mouse

Reactivity Human

Form Liquid

Purification Protein A/G purification

Isotype IgG1, kappa

Recommend Usage
Immunohistochemistry (0.5-1 ug/mL)
Western blot (0.5-1 ug/mL)
The optimal working dilution should be determined by the end user.

Storage Buffer In PBS (0.05% BSA, 0.05% sodium azide).

Storage Instruction

Store at 4°C.
Aliquot to avoid repeated freezing and thawing.

Note

This product contains sodium azide: a POISONOUS AND HAZARDOUS SUBSTANCE which should be handled by trained staff only.

Applications

- Western Blot
- Immunohistochemistry (Formalin/PFA-fixed paraffin-embedded sections)
Immunohistochemical staining of human intestine with MUC2 monoclonal antibody, clone SPM296 (Cat # MAB12113).

Gene Info — MUC2

Entrez GeneID[4583](#)**Protein Accession#**[Q02817](#)**Gene Name**

MUC2

Gene Alias

MLP, SMUC

Gene Description

mucin 2, oligomeric mucus/gel-forming

Omim ID[158370](#)**Gene Ontology**[Hyperlink](#)**Gene Summary**

This gene encodes a member of the mucin protein family. Mucins are high molecular weight glycoproteins produced by many epithelial tissues. The protein encoded by this gene is secreted and forms an insoluble mucous barrier that protects the gut lumen. The protein polymerizes into a gel of which 80% is composed of oligosaccharide side chains by weight. The protein features a central domain containing tandem repeats rich in threonine and proline that varies between 50 and 115 copies in different individuals. Alternatively spliced transcript variants of this gene have been described, but their full-length nature is not known. [provided by RefSeq]

Other Designations

mucin 2|mucin 2, intestinal/tracheal|mucin-like protein

Pathway

- [Vibrio cholerae infection](#)

Disease

- [Asthma](#)
- [Bronchiolitis](#)
- [Chronic Disease](#)
- [Genetic Predisposition to Disease](#)
- [Infant](#)
- [Lung Diseases](#)
- [Otitis Media](#)
- [Otitis Media with Effusion](#)
- [Recurrence](#)
- [Respiratory Syncytial Virus Infections](#)
- [Stomach Neoplasms](#)
- [Tobacco Use Disorder](#)