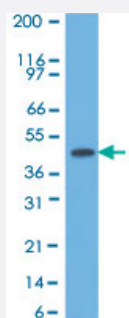


Krt17 monoclonal antibody, clone SPM560

Catalog # MAB12102 Size 100 ug

Applications



Western Blot (Cell lysate)

Western blot analysis of HeLa lysate with KRT17 monoclonal antibody, clone SPM560 (Cat # MAB12102).



Immunohistochemistry (Formalin/PFA-fixed paraffin-embedded sections)

Immunohistochemical staining of human skin with KRT17 monoclonal antibody, clone SPM560 (Cat # MAB12102).

Specification

Product Description	Mouse monoclonal antibody raised against Krt17.
Immunogen	Cytoskeletal fraction prepared from rat colon epithelium.
Host	Mouse
Reactivity	Human, Rat
Form	Liquid
Purification	Protein A/G purification
Isotype	IgG2b, kappa

Recommend Usage	Immunohistochemistry (0.5-1 ug/mL) Western blot (0.5-1 ug/mL) The optimal working dilution should be determined by the end user.
Storage Buffer	In PBS (0.05% BSA, 0.05% sodium azide).
Storage Instruction	Store at 4°C. Aliquot to avoid repeated freezing and thawing.
Note	This product contains sodium azide: a POISONOUS AND HAZARDOUS SUBSTANCE which should be handled by trained staff only.

Applications

- Western Blot (Cell lysate)

Western blot analysis of HeLa lysate with KRT17 monoclonal antibody, clone SPM560 (Cat # MAB12102).

- Immunohistochemistry (Formalin/PFA-fixed paraffin-embedded sections)

Immunohistochemical staining of human skin with KRT17 monoclonal antibody, clone SPM560 (Cat # MAB12102).

Gene Info — Krt17

Entrez GeneID	287702
----------------------	------------------------

Protein Accession#	Q6IFU8
---------------------------	------------------------

Gene Name	Krt17
------------------	-------

Gene Alias	Ka17
-------------------	------

Gene Description	keratin 17
-------------------------	------------

Gene Ontology	Hyperlink
----------------------	---------------------------

Other Designations	type I keratin KA17
---------------------------	---------------------