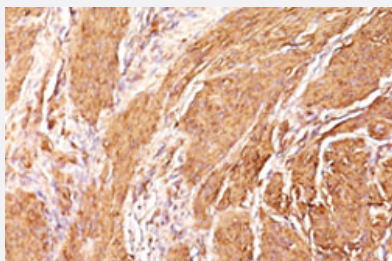


Muscle specific actin monoclonal antibody, clone SPM160

Catalog # MAB12070 Size 100 ug

Applications



Immunohistochemistry (Formalin/PFA-fixed paraffin-embedded sections)

Immunohistochemical staining (Formalin-fixed paraffin-embedded sections) of human leiomyosarcoma with Muscle specific actin monoclonal antibody, clone SPM160 (Cat# MAB12070).

Specification

Product Description Mouse monoclonal antibody raised against muscle specific actin.

Immunogen SDS extract of human myocardium.

Host Mouse

Reactivity Human, Rabbit, Rat

Form Liquid

Purification Protein A/G purification

Isotype IgG1, kappa

Recommend Usage Immunohistochemistry (0.5-1 ug/mL)
Western Blot (0.5-1 ug/mL)
The optimal working dilution should be determined by the end user.

Storage Buffer In PBS (0.05% BSA, 0.05% sodium azide).

Storage Instruction Store at 4°C.
Aliquot to avoid repeated freezing and thawing.

Note

This product contains sodium azide: a POISONOUS AND HAZARDOUS SUBSTANCE which should be handled by trained staff only.

Applications

- Western Blot
- Immunohistochemistry (Formalin/PFA-fixed paraffin-embedded sections)

Immunohistochemical staining (Formalin-fixed paraffin-embedded sections) of human leiomyosarcoma with Muscle specific actin monoclonal antibody, clone SPM160 (Cat# MAB12070).

Gene Info — ACTA1

Entrez GeneID [58](#)

Gene Name ACTA1

Gene Alias ACTA, ASMA, CFTD, CFTD1, CFTDM, MPFD, NEM1, NEM2, NEM3

Gene Description actin, alpha 1, skeletal muscle

Omim ID [102610](#) [161800](#) [255310](#)

Gene Ontology [Hyperlink](#)

Gene Summary The product encoded by this gene belongs to the actin family of proteins, which are highly conserved proteins that play a role in cell motility, structure and integrity. Alpha, beta and gamma actin isoforms have been identified, with alpha actins being a major constituent of the contractile apparatus, while beta and gamma actins are involved in the regulation of cell motility. This actin is an alpha actin that is found in skeletal muscle. Mutations in this gene cause nemaline myopathy type 3, congenital myopathy with excess of thin myofilaments, congenital myopathy with cores, and congenital myopathy with fiber-type disproportion, diseases that lead to muscle fiber defects. [provided by RefSeq]

Other Designations OTTHUMP00000036123|alpha skeletal muscle actin

Gene Info — ACTA2

Entrez GeneID [59](#)

Gene Name ACTA2

Gene Alias AAT6, ACTSA

Gene Description	actin, alpha 2, smooth muscle, aorta
Omim ID	102620
Gene Ontology	Hyperlink
Gene Summary	The protein encoded by this gene belongs to the actin family of proteins, which are highly conserved proteins that play a role in cell motility, structure and integrity. Alpha, beta and gamma actin isoforms have been identified, with alpha actins being a major constituent of the contractile apparatus, while beta and gamma actins are involved in the regulation of cell motility. This actin is an alpha actin that is found in skeletal muscle. Defects in this gene cause aortic aneurysm familial thoracic type 6. Multiple alternatively spliced variants, encoding the same protein, have been identified. [provided by RefSeq]
Other Designations	OTTHUMP00000020042 alpha 2 actin alpha-cardiac actin growth-inhibiting gene 46

Gene Info — ACTC1

Entrez GeneID	70
Gene Name	ACTC1
Gene Alias	ACTC, CMD1R, CMH11
Gene Description	actin, alpha, cardiac muscle 1
Omim ID	102540 192600
Gene Ontology	Hyperlink
Gene Summary	Actins are highly conserved proteins that are involved in various types of cell motility. Polymerization of globular actin (G-actin) leads to a structural filament (F-actin) in the form of a two-stranded helix. Each actin can bind to four others. The protein encoded by this gene belongs to the actin family which is comprised of three main groups of actin isoforms, alpha, beta, and gamma. The alpha actins are found in muscle tissues and are a major constituent of the contractile apparatus. Defects in this gene have been associated with idiopathic dilated cardiomyopathy (IDC) and familial hypertrophic cardiomyopathy (FHC). [provided by RefSeq]
Other Designations	cardiac muscle alpha actin 1

Pathway

- [Cardiac muscle contraction](#)
- [Hypertrophic cardiomyopathy \(HCM\)](#)
- [Vascular smooth muscle contraction](#)

Disease

- [Acute Disease](#)
- [Alzheimer disease](#)
- [Alzheimer Disease](#)
- [Atherosclerosis](#)
- [Calcinosis](#)
- [Cardiomegaly](#)
- [Cardiomyopathies](#)
- [Cardiomyopathy](#)
- [Cardiovascular Diseases](#)
- [Cardiovascular Diseases](#)
- [Coronary Artery Disease](#)
- [Diabetes Mellitus](#)
- [Diabetes Mellitus](#)
- [Diabetes Mellitus](#)
- [Edema](#)
- [Edema](#)
- [Genetic Predisposition to Disease](#)
- [Genetic Predisposition to Disease](#)
- [Myocardial Infarction](#)
- [Myopia](#)
- [Parkinson disease](#)