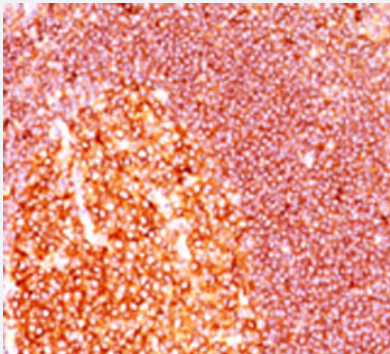


MALT1 monoclonal antibody, clone SPM578

Catalog # MAB12066 Size 100 ug

Applications



Immunohistochemistry (Formalin/PFA-fixed paraffin-embedded sections)

Immunohistochemical staining (Formalin-fixed paraffin-embedded sections) of human tonsil with MALT1 monoclonal antibody, clone SPM578 (Cat# MAB12066).

Specification

Product Description	Mouse monoclonal antibody raised against partial recombinant MALT1.
Immunogen	Recombinant protein corresponding to amino acid 701-808 of human MALT1.
Host	Mouse
Theoretical MW (kDa)	93
Reactivity	Human
Form	Liquid
Purification	Protein A/G purification
Isotype	IgG1, kappa
Recommend Usage	Immunohistochemistry (0.5-1 ug/mL) Western Blot (0.5-1 ug/mL) The optimal working dilution should be determined by the end user.
Storage Buffer	In PBS (0.05% BSA, 0.05% sodium azide).

Storage Instruction

Store at 4°C.
Aliquot to avoid repeated freezing and thawing.

Note

This product contains sodium azide: a POISONOUS AND HAZARDOUS SUBSTANCE which should be handled by trained staff only.

Applications

- Western Blot
- Immunohistochemistry (Formalin/PFA-fixed paraffin-embedded sections)
Immunohistochemical staining (Formalin-fixed paraffin-embedded sections) of human tonsil with MALT1 monoclonal antibody, clone SPM578 (Cat# MAB12066).

Gene Info — MALT1

Entrez GeneID[10892](#)**Gene Name**

MALT1

Gene Alias

DKFZp434L132, MLT, MLT1

Gene Description

mucosa associated lymphoid tissue lymphoma translocation gene 1

Omim ID[604860](#)**Gene Ontology**[Hyperlink](#)**Gene Summary**

This gene has been found to be recurrently rearranged in chromosomal translocation with two other genes - baculoviral IAP repeat-containing protein 3 (also known as apoptosis inhibitor 2) and immunoglobulin heavy chain locus - in mucosa-associated lymphoid tissue lymphomas. The protein encoded by this gene may play a role in NF-kappaB activation. Two alternatively spliced transcript variants encoding different isoforms have been described for this gene. [provided by RefSeq]

Other Designations

MALT associated translocation|MALT-lymphoma associated translocation|caspase-like protein|mucosa associated lymphoid tissue lymphoma translocation protein 1|paracaspase

Pathway

- [B cell receptor signaling pathway](#)
- [T cell receptor signaling pathway](#)

Disease

- [Gastritis](#)
- [Genetic Predisposition to Disease](#)
- [Helicobacter Infections](#)
- [Lymphoma](#)
- [Stomach Neoplasms](#)