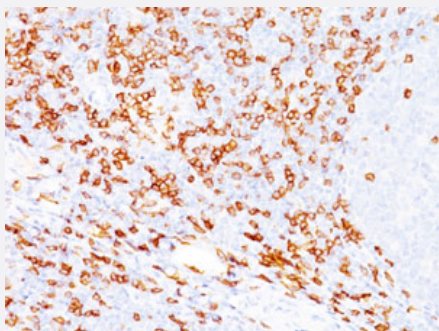


CD8A monoclonal antibody, clone SPM548

Catalog # MAB12029 Size 100 ug

Applications



Immunohistochemistry (Formalin/PFA-fixed paraffin-embedded sections)

Immunohistochemical staining (Formalin-fixed paraffin-embedded sections) of human tonsil with CD8A monoclonal antibody, clone SPM548 (Cat # MAB12029).

Specification

Product Description Mouse monoclonal antibody raised against CD8A.

Immunogen Recombinant protein corresponding to human CD8A.

Host Mouse

Theoretical MW (kDa) 32

Reactivity Human

Form Liquid

Purification Protein A/G purification

Isotype IgG1

Recommend Usage
Immunohistochemistry (0.5-1 ug/mL)
Western Blot (0.5-1 ug/mL)
The optimal working dilution should be determined by the end user.

Storage Buffer In 10mM PBS (0.05% BSA, 0.05% sodium azide).

Storage Instruction

Store at 4°C.
Aliquot to avoid repeated freezing and thawing.

Note

This product contains sodium azide: a POISONOUS AND HAZARDOUS SUBSTANCE which should be handled by trained staff only.

Applications

- Western Blot
- Immunohistochemistry (Formalin/PFA-fixed paraffin-embedded sections)

Immunohistochemical staining (Formalin-fixed paraffin-embedded sections) of human tonsil with CD8A monoclonal antibody, clone SPM548 (Cat # MAB12029).

Gene Info — CD8A

Entrez GeneID[925](#)**Gene Name**

CD8A

Gene Alias

CD8, Leu2, MAL, p32

Gene Description

CD8a molecule

Omim ID[186910 608957](#)**Gene Ontology**[Hyperlink](#)**Gene Summary**

The CD8 antigen is a cell surface glycoprotein found on most cytotoxic T lymphocytes that mediates efficient cell-cell interactions within the immune system. The CD8 antigen acts as a coreceptor with the T-cell receptor on the T lymphocyte to recognize antigens displayed by an antigen presenting cell (APC) in the context of class I MHC molecules. The coreceptor functions as either a homodimer composed of two alpha chains, or as a heterodimer composed of one alpha and one beta chain. Both alpha and beta chains share significant homology to immunoglobulin variable light chains. This gene encodes the CD8 alpha chain isoforms. Multiple transcript variants encoding different isoforms have been found for this gene. [provided by RefSeq]

Other Designations

CD8 antigen alpha polypeptide|CD8 antigen, alpha polypeptide (p32)|Leu2 T-lymphocyte antigen|OKT8 T-cell antigen|T cell co-receptor|T-cell antigen Leu2|T-cell surface glycoprotein CD8 alpha chain|T-lymphocyte differentiation antigen T8/Leu-2|T8 T-cell ant

Pathway

- [Antigen processing and presentation](#)
- [Cell adhesion molecules \(CAMs\)](#)
- [Hematopoietic cell lineage](#)
- [Primary immunodeficiency](#)
- [T cell receptor signaling pathway](#)