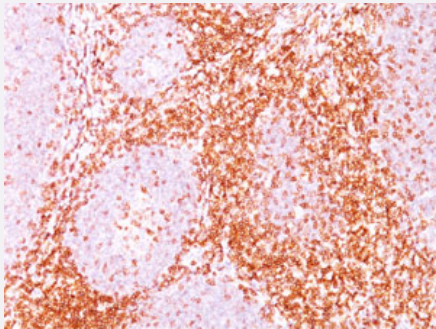


CD6 monoclonal antibody, clone SPM547

Catalog # MAB12028 Size 100 ug

Applications



Immunohistochemistry (Formalin/PFA-fixed paraffin-embedded sections)

Immunohistochemical staining (Formalin-fixed paraffin-embedded sections) of human tonsil with CD6 monoclonal antibody, clone SPM547 (Cat # MAB12028).

Specification

Product Description	Mouse monoclonal antibody raised against CD6.
Immunogen	Recombinant protein corresponding to human CD6.
Host	Mouse
Theoretical MW (kDa)	90-130
Reactivity	Human
Form	Liquid
Purification	Protein A/G purification
Isotype	IgG1
Recommend Usage	Immunohistochemistry (0.5-1 ug/mL) Western Blot (0.5-1 ug/mL) The optimal working dilution should be determined by the end user.
Storage Buffer	In 10mM PBS (0.05% BSA, 0.05% sodium azide).

Storage Instruction

Store at 4°C.
Aliquot to avoid repeated freezing and thawing.

Note

This product contains sodium azide: a POISONOUS AND HAZARDOUS SUBSTANCE which should be handled by trained staff only.

Applications

- Western Blot
- Immunohistochemistry (Formalin/PFA-fixed paraffin-embedded sections)
Immunohistochemical staining (Formalin-fixed paraffin-embedded sections) of human tonsil with CD6 monoclonal antibody, clone SPM547 (Cat # MAB12028).

Gene Info — CD6

Entrez GeneID[923](#)**Gene Name**

CD6

Gene Alias

FLJ44171, TP120

Gene Description

CD6 molecule

Omim ID[186720](#)**Gene Ontology**[Hyperlink](#)**Gene Summary**

CD6 is a monomeric 105- or 130-kD membrane glycoprotein that is involved in T-cell activation. The size difference between the 2 CD6 forms is due to differences in phosphorylation (Robinson et al., 1995 [PubMed 7589069]).[supplied by OMIM]

Other Designations

CD6 antigen

Pathway

- [Cell adhesion molecules \(CAMs\)](#)

Disease

- [Genetic Predisposition to Disease](#)

- [Multiple Sclerosis](#)