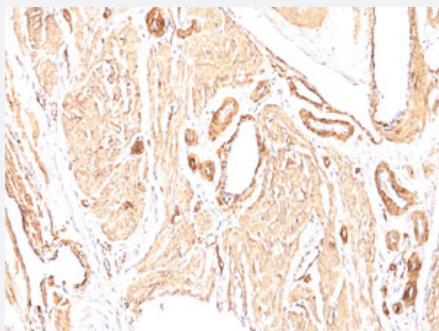


ACTA2 monoclonal antibody, clone SPM332

Catalog # MAB12016 Size 100 ug

Applications



Immunohistochemistry (Formalin/PFA-fixed paraffin-embedded sections)

Immunohistochemical staining (Formalin-fixed paraffin-embedded sections) of human leiomyosarcoma with ACTA2 monoclonal antibody, clone SPM332 (Cat # MAB12016).

Specification

Product Description	Mouse monoclonal antibody raised against ACTA2.
Immunogen	N-Terminal decapeptide of alpha smooth muscle isoform of actin and conjugated to KLH.
Host	Mouse
Theoretical MW (kDa)	42
Reactivity	Human, Mouse, Rat
Form	Liquid
Purification	Protein A/G purification
Isotype	IgG2a, kappa
Recommend Usage	Immunohistochemistry (0.5-1 ug/mL) Western Blot (0.5-1 ug/mL) The optimal working dilution should be determined by the end user.
Storage Buffer	In 10mM PBS (0.05% BSA, 0.05% sodium azide).

Storage Instruction

Store at 4°C.
Aliquot to avoid repeated freezing and thawing.

Note

This product contains sodium azide: a POISONOUS AND HAZARDOUS SUBSTANCE which should be handled by trained staff only.

Applications

- Western Blot
- Immunohistochemistry (Formalin/PFA-fixed paraffin-embedded sections)

Immunohistochemical staining (Formalin-fixed paraffin-embedded sections) of human leiomyosarcoma with ACTA2 monoclonal antibody, clone SPM332 (Cat # MAB12016).

Gene Info — ACTA2

Entrez GeneID[59](#)**Gene Name**

ACTA2

Gene Alias

AAT6, ACTSA

Gene Description

actin, alpha 2, smooth muscle, aorta

Omim ID[102620](#)**Gene Ontology**[Hyperlink](#)**Gene Summary**

The protein encoded by this gene belongs to the actin family of proteins, which are highly conserved proteins that play a role in cell motility, structure and integrity. Alpha, beta and gamma actin isoforms have been identified, with alpha actins being a major constituent of the contractile apparatus, while beta and gamma actins are involved in the regulation of cell motility. This actin is an alpha actin that is found in skeletal muscle. Defects in this gene cause aortic aneurysm familial thoracic type 6. Multiple alternatively spliced variants, encoding the same protein, have been identified. [provided by RefSeq]

Other Designations

OTTHUMP00000020042|alpha 2 actin|alpha-cardiac actin|growth-inhibiting gene 46

Pathway

- [Vascular smooth muscle contraction](#)

Disease

- [Alzheimer Disease](#)
- [Cardiovascular Diseases](#)
- [Diabetes Mellitus](#)
- [Edema](#)
- [Genetic Predisposition to Disease](#)