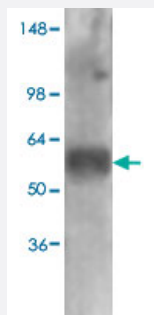


Slc17a6 monoclonal antibody, clone S29-29

Catalog # MAB11530 Size 100 ug

Applications



Western Blot (Tissue lysate)

Western blot analysis of rat brain membrane tissues with Slc17a6 monoclonal antibody, clone S29-29 (MAB11530) at 1:1000 dilution.

Specification

Product Description	Mouse monoclonal antibody raised against recombinant of Slc17a6.
Immunogen	Recombinant fusion protein corresponding to amino acids 501-582 at C-terminus of rat Slc17a6.
Host	Mouse
Specificity	Detects ~60 kDa.
Form	Liquid
Purification	Protein G Purified
Isotype	IgG1
Recommend Usage	Immunohistochemistry Western blot (1:1000) The optimal working dilution should be determined by the end user.
Storage Buffer	In PBS, pH 7.4 (50% glycerol)
Storage Instruction	Store at -20°C. Aliquot to avoid repeated freezing and thawing.

Applications

- Western Blot (Tissue lysate)

Western blot analysis of rat brain membrane tissues with Slc17a6 monoclonal antibody, clone S29-29 (MAB11530) at 1:1000 dilution.

- Immunohistochemistry

Gene Info — Slc17a6

Entrez GeneID	84487
Protein Accession#	Q9JI12
Gene Name	Slc17a6
Gene Alias	Dnpi, Vglut2
Gene Description	solute carrier family 17 (sodium-dependent inorganic phosphate cotransporter), member 6
Gene Ontology	Hyperlink
Gene Summary	O
Other Designations	differentiation-associated Na-dependent inorganic phosphate cotransporter vesicular glutamate transporter 2