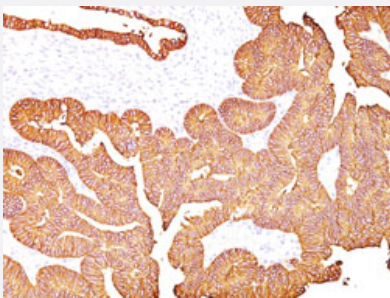


EPCAM monoclonal antibody, clone 323/A3

Catalog # MAB11347 Size 100 ug

Applications



Immunohistochemistry

Immunohistochemical staining of human colon with EPCAM monoclonal antibody, clone 323/A3 (Cat # MAB11347) at 1-2 ug/mL, for 30 min at RT.

Specification

Product Description Mouse monoclonal antibody raised against EPCAM.

Immunogen Human MCF-7 breast cancer cells.

Host Mouse

Reactivity Human

Form Liquid

Purification Protein A/G affinity chromatography

Isotype IgG1, kappa

Recommend Usage

- Flow Cytometry (0.5-1 ug/million cells)
- Immunofluorescence (1-2 ug/mL)
- Immunohistochemistry (1-2 ug/mL for 30 min at RT)
- Immunoprecipitation (1-2 ug/500 ug protein)
- Western Blot (0.25-0.5 ug/mL)
- The optimal working dilution should be determined by the end user.

Storage Buffer In PBS, pH 7.4 (0.05% BSA, 0.05% sodium azide)

Storage Instruction

Store at 4°C.

Note

This product contains sodium azide: a POISONOUS AND HAZARDOUS SUBSTANCE which should be handled by trained staff only.

Applications

- Western Blot

- Immunohistochemistry

Immunohistochemical staining of human colon with EPCAM monoclonal antibody, clone 323/A3 (Cat # MAB11347) at 1-2 ug/mL, for 30 min at RT.

- Immunofluorescence

- Immunoprecipitation

- Flow Cytometry

Gene Info — EPCAM

Entrez GeneID[4072](#)**Gene Name**

EPCAM

Gene Alias

17-1A, 323/A3, CD326, CO-17A, CO17-1A, EGP, EGP-2, EGP34, EGP40, ESA, Ep-CAM, GA733-2, HEA125, KS1/4, KSA, M4S1, MH99, MIC18, MK-1, MOC31, TACST-1, TACSTD1, TROP1, hEGP-2

Gene Description

epithelial cell adhesion molecule

Omim ID[185535](#)**Gene Ontology**[Hyperlink](#)**Gene Summary**

This gene encodes a carcinoma-associated antigen and is a member of a family that includes at least two type I membrane proteins. This antigen is expressed on most normal epithelial cells and gastrointestinal carcinomas and functions as a homotypic calcium-independent cell adhesion molecule. The antigen is being used as a target for immunotherapy treatment of human carcinomas. Mutations in this gene result in congenital tufting enteropathy. [provided by RefSeq]

Other Designations

adenocarcinoma-associated antigen|carcinoma-associated antigen GA733-2|human epithelial glycoprotein-2|membrane component, chromosome 4, surface marker (35kD glycoprotein)|tumor-associated calcium signal transducer 1

Disease

- [Genetic Predisposition to Disease](#)
- [Ovarian Neoplasms](#)