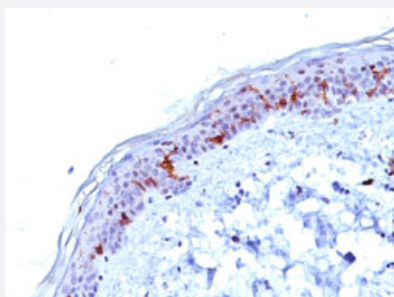


CD1A monoclonal antibody, clone O10

Catalog # MAB11333 Size 100 ug

Applications



Immunohistochemistry

Immunohistochemical staining of human skin with CD1A monoclonal antibody, clone O10 (Cat # MAB11333) at 1-2 ug/mL, for 30 min at RT.

Specification

Product Description Mouse monoclonal antibody raised against CD1A.

Immunogen Human thymus cells.

Host Mouse

Reactivity Human

Form Liquid

Purification Protein A/G affinity chromatography

Isotype IgG1, kappa

Recommend Usage

- ELISA
- Flow Cytometry (0.5-1 ug/million cells)
- Immunofluorescence (1-2 ug/mL)
- Immunohistochemistry (1-2 ug/mL for 30 min at RT)
- Immunoprecipitation (1-2 ug/500 ug protein)
- Western Blot (0.25-0.5 ug/mL)
- The optimal working dilution should be determined by the end user.

Storage Buffer In PBS, pH 7.4 (0.05% BSA, 0.05% sodium azide)

Storage Instruction

Store at 4°C.

Note

This product contains sodium azide: a POISONOUS AND HAZARDOUS SUBSTANCE which should be handled by trained staff only.

Applications

- Western Blot
- Immunohistochemistry
Immunohistochemical staining of human skin with CD1A monoclonal antibody, clone O10 (Cat # MAB11333) at 1-2 ug/mL, for 30 min at RT.
- Immunofluorescence
- Immunoprecipitation
- Enzyme-linked Immunoabsorbent Assay
- Flow Cytometry

Gene Info — CD1A

Entrez GeneID[909](#)**Gene Name**

CD1A

Gene Alias

CD1, FCB6, HTA1, R4, T6

Gene Description

CD1a molecule

Omim ID[188370](#)**Gene Ontology**[Hyperlink](#)

Gene Summary

This gene encodes a member of the CD1 family of transmembrane glycoproteins, which are structurally related to the major histocompatibility complex (MHC) proteins and form heterodimers with beta-2-microglobulin. The CD1 proteins mediate the presentation of primarily lipid and glycolipid antigens of self or microbial origin to T cells. The human genome contains five CD1 family genes organized in a cluster on chromosome 1. The CD1 family members are thought to differ in their cellular localization and specificity for particular lipid ligands. The protein encoded by this gene localizes to the plasma membrane and to recycling vesicles of the early endocytic system. Alternatively spliced transcript variants have been observed, but their biological validity has not been determined. [provided by RefSeq]

Other Designations

CD1A antigen|CD1A antigen, a polypeptide|OTTHUMP00000018907|T-cell surface antigen T6/L eu-6|T-cell surface glycoprotein CD1a|cluster of differentiation 1 A|cortical thymocyte antigen CD1 A|differentiation antigen CD1-alpha-3|epidermal dendritic cell marker

Pathway

- [Hematopoietic cell lineage](#)

Disease

- [Campylobacter Infections](#)
- [Genetic Predisposition to Disease](#)
- [Guillain-Barre Syndrome](#)
- [Lung Diseases](#)
- [Mycobacterium Infections](#)
- [Polyradiculoneuropathy](#)