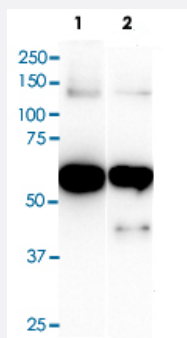


# MBP monoclonal antibody, clone 10C12

Catalog # MAB1133      Size 100 uL

## Applications



### Western Blot (Recombinant protein)

Western blot analysis of Lane 1: MBP-tagged WLS protein (58.9kDa), Lane 2: MBP-tagged IRF7 protein (59.3kDa).

## Specification

<b>Product Description</b>	Mouse monoclonal antibody raised against recombinant MBP (Maltose Binding Protein).
<b>Immunogen</b>	Recombinant protein corresponding to MBP (Maltose Binding Protein) purified from E. coli.
<b>Host</b>	Mouse
<b>Reactivity</b>	Human
<b>Form</b>	Liquid
<b>Purification</b>	Protein A purification
<b>Isotype</b>	IgG1, kappa
<b>Recommend Usage</b>	ELISA Western Blot The optimal working dilution should be determined by the end user.
<b>Storage Buffer</b>	In PBS, pH 7.4 (10% glycerol, 0.02% sodium azide).
<b>Storage Instruction</b>	Store at 2°C to 8°C for 1 week. For long term storage, aliquot and store at -20°C to -80°C. Aliquot to avoid repeated freezing and thawing.

**Note**

This product contains sodium azide: a POISONOUS AND HAZARDOUS SUBSTANCE which should be handled by trained staff only.

## Applications

- Western Blot (Recombinant protein)

Western blot analysis of Lane 1: MBP-tagged WLS protein (58.9kDa), Lane 2: MBP-tagged IRF7 protein (59.3kDa).

- Enzyme-linked Immunoabsorbent Assay

## Publication Reference

- [Human ISG15 conjugation targets both IFN-induced and constitutively expressed proteins functioning in diverse cellular pathways.](#)  
Zhao C, Denison C, Huibregtse JM, Gygi S, Krug RM.  
PNAS 2005 Jul; 102(29):10200.
- [Influenza B virus NS1 protein inhibits conjugation of the interferon \(IFN\)-induced ubiquitin-like ISG15 protein.](#)  
Yuan W, Krug RM.  
The EMBO journal 2001 Feb; 20(3):362.
- [Immunoregulatory properties of ISG15, an interferon-induced cytokine.](#)  
D'Cunha J, Knight E Jr, Haas AL, Truitt RL, Borden EC.  
PNAS 1996 Jan; 93(1):211.