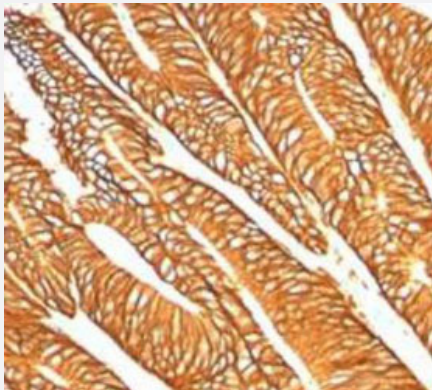


# EPCAM monoclonal antibody, clone VU1D9

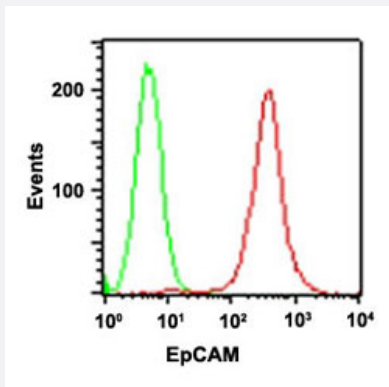
Catalog # MAB11316      Size 100 ug

## Applications



### Immunohistochemistry (Formalin/PFA-fixed paraffin-embedded sections)

Immunohistochemical staining (Formalin-fixed paraffin-embedded sections) analysis of human colon cancer with EPCAM monoclonal antibody, clone VU1D9 (Cat # MAB11316) at 1:100 using peroxidase-conjugate and DAB chromogen. Immunohistochemical staining of formalin/paraffin tissues is enhanced by unmasking of the target epitope with trypsin at 1 mg/ml PBS for 15 min at 37°C.



### Flow Cytometry

Flow cytometric analysis of HT-29 cells using EpCAM monoclonal antibody, clone VU1D9 (Cat #MAB11316) (red) and isotype control (green) at 0.2 ug/10<sup>6</sup> cells.

## Specification

Product Description	Mouse monoclonal antibody raised against EpCAM (CD326).
Immunogen	The NC1-H69 human small cell lung carcinoma line.
Host	Mouse
Reactivity	Human
Form	Liquid

Purification	Protein G purification
Isotype	IgG1, kappa
Recommend Usage	Immunohistochemistry (Formalin/PFA-fixed paraffin-embedded sections) (1:100-1:200) The optimal working dilution should be determined by the end user.
Storage Buffer	In PBS (0.05% BSA, 0.05% sodium azide)
Storage Instruction	Store at 4°C. Aliquot to avoid repeated freezing and thawing.
Note	This product contains sodium azide: a POISONOUS AND HAZARDOUS SUBSTANCE which should be handled by trained staff only.

## Applications

- Immunohistochemistry (Formalin/PFA-fixed paraffin-embedded sections)

Immunohistochemical staining (Formalin-fixed paraffin-embedded sections) analysis of human colon cancer with EPCAM monoclonal antibody, clone VU1D9 (Cat # MAB11316) at 1:100 using peroxidase-conjugate and DAB chromogen.

Immunohistochemical staining of formalin/paraffin tissues is enhanced by unmasking of the target epitope with trypsin at 1 mg/ml PBS for 15 min at 37°C.

- Flow Cytometry

Flow cytometric analysis of HT-29 cells using EpCAM monoclonal antibody, clone VU1D9 (Cat #MAB11316) (red) and isotype control (green) at 0.2 ug/10<sup>6</sup> cells.

## Gene Info — EPCAM

Entrez GeneID	<a href="#">4072</a>
Gene Name	EPCAM
Gene Alias	17-1A, 323/A3, CD326, CO-17A, CO17-1A, EGP, EGP-2, EGP34, EGP40, ESA, Ep-CAM, GA7 33-2, HEA125, KS1/4, KSA, M4S1, MH99, MIC18, MK-1, MOC31, TACST-1, TACSTD1, TROP 1, hEGP-2
Gene Description	epithelial cell adhesion molecule
Omim ID	<a href="#">185535</a>
Gene Ontology	<a href="#">Hyperlink</a>

**Gene Summary**

This gene encodes a carcinoma-associated antigen and is a member of a family that includes at least two type I membrane proteins. This antigen is expressed on most normal epithelial cells and gastrointestinal carcinomas and functions as a homotypic calcium-independent cell adhesion molecule. The antigen is being used as a target for immunotherapy treatment of human carcinomas. Mutations in this gene result in congenital tufting enteropathy. [provided by RefSeq]

**Other Designations**

adenocarcinoma-associated antigen|carcinoma-associated antigen GA733-2|human epithelial glycoprotein-2|membrane component, chromosome 4, surface marker (35kD glycoprotein)|tumor-associated calcium signal transducer 1

**Disease**

- [Genetic Predisposition to Disease](#)
- [Ovarian Neoplasms](#)