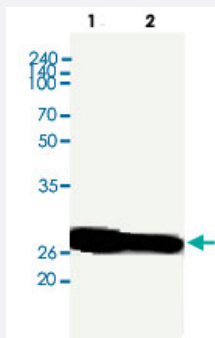


# IL33 monoclonal antibody, clone 4E9

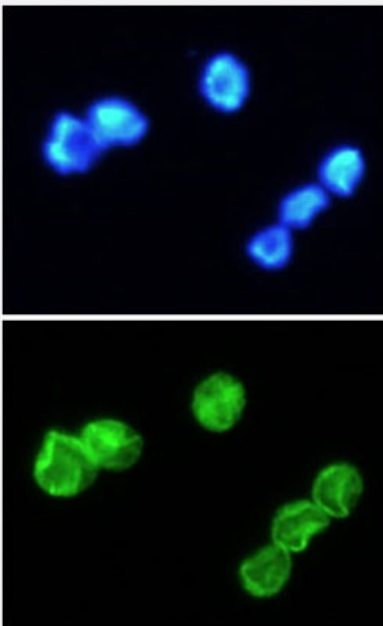
Catalog # MAB1130      Size 100 uL

## Applications



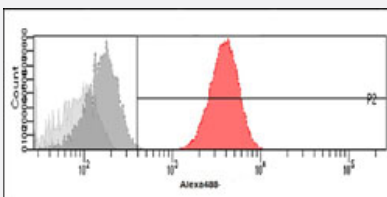
### Western Blot (Cell lysate)

Western blot analysis of Lane 1: 293T cell lysate, Lane 2: Jurkat cell lysate.



### Immunofluorescence

Immunofluorescence analysis of Jurkat cells. The cell was stained with IL33 monoclonal antibody, clone 4E9 (1:100). The secondary antibody (green) was used Alexa Fluor 488. DAPI was stained the cell nucleus (blue).



### Flow Cytometry

Flow cytometry analysis of Jurkat cells. The cell was stained with IL33 monoclonal antibody, clone 4E9 at 2-5 ug for 1x10<sup>6</sup> cells (red). A Goat anti mouse IgG (Alexa fluor 488) was used as the secondary antibody. Mouse monoclonal IgG was used as the isotype control (dark gray), cells without incubation with primary and secondary antibody was used as the negative control (light gray).

## Specification

<b>Product Description</b>	Mouse monoclonal antibody raised against partial recombinant human IL33.
<b>Immunogen</b>	Recombinant protein corresponding to amino acids 112-270 of human IL33.
<b>Host</b>	Mouse
<b>Reactivity</b>	Human
<b>Form</b>	Liquid
<b>Purification</b>	Protein G purification
<b>Isotype</b>	IgG2b, kappa
<b>Recommend Usage</b>	ELISA Flow Cytometry Immunocytochemistry (1:100) Immunofluorescence (1:100) Western Blot The optimal working dilution should be determined by the end user.
<b>Storage Buffer</b>	In PBS, pH 7.4 (10% glycerol, 0.02% sodium azide).
<b>Storage Instruction</b>	Store at 2°C to 8°C for 1 week. For long term storage, aliquot and store at -20°C to -80°C. Aliquot to avoid repeated freezing and thawing.
<b>Note</b>	This product contains sodium azide: a POISONOUS AND HAZARDOUS SUBSTANCE which should be handled by trained staff only.

## Applications

- Western Blot (Cell lysate)

Western blot analysis of Lane 1: 293T cell lysate, Lane 2: Jurkat cell lysate.

- Immunocytochemistry

- Immunofluorescence

Immunofluorescence analysis of Jurkat cells. The cell was stained with IL33 monoclonal antibody, clone 4E9 (1:100). The secondary antibody (green) was used Alexa Fluor 488. DAPI was stained the cell nucleus (blue).

- Enzyme-linked Immunoabsorbent Assay

- Flow Cytometry

Flow cytometry analysis of Jurkat cells. The cell was stained with IL33 monoclonal antibody, clone 4E9 at 2-5 ug for  $1 \times 10^6$  cells (red). A Goat anti mouse IgG (Alexa fluor 488) was used as the secondary antibody. Mouse monoclonal IgG was used as the isotype control (dark gray), cells without incubation with primary and secondary antibody was used as the negative control (light gray).

## Gene Info — IL33

Entrez GeneID	<a href="#">90865</a>
GeneBank Accession#	<a href="#">NM_033439</a>
Protein Accession#	<a href="#">O95760</a>
Gene Name	IL33
Gene Alias	C9orf26, DKFZp586H0523, DVS27, NF-HEV, NFEHEV, RP11-575C20.2
Gene Description	interleukin 33
Omim ID	<a href="#">608678</a>
Gene Ontology	<a href="#">Hyperlink</a>
Other Designations	DVS27-related protein OTTHUMP00000021041 nuclear factor from high endothelial venules

## Disease

- [Alzheimer disease](#)
- [Asthma](#)
- [Cerebral Amyloid Angiopathy](#)
- [Genetic Predisposition to Disease](#)
- [Hypersensitivity](#)
- [Myocardial Infarction](#)
- [Nasal Polyps](#)
- [Neuroblastoma](#)
- [Obesity](#)

- [Occupational Diseases](#)
- [Tobacco Use Disorder](#)