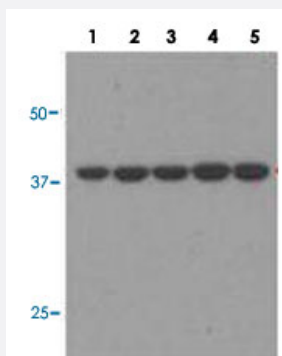


JTV1 monoclonal antibody

Catalog # MAB11292 Size 200 uL

Applications



Western Blot

Western blot analysis of Lane 1: A549, Lane 2: H460, Lane 3: H1703, Lane 4: 293, Lane 5: HeLA with JTV1 monoclonal antibody (MAB11292) at 1:1000 dilution.

Specification

Product Description	Mouse monoclonal antibody raised against recombinant JTV1.
Immunogen	Recombinant protein corresponding to denatured full length native recombinant human JTV1.
Host	Mouse
Reactivity	Human, Mouse
Form	Liquid
Recommend Usage	Western Blot(1:1000) The optimal working dilution should be determined by the end user.
Storage Buffer	In serum (0.05% sodium azide)
Storage Instruction	Store at -20°C. Aliquot to avoid repeated freezing and thawing.
Note	This product contains sodium azide: a POISONOUS AND HAZARDOUS SUBSTANCE which should be handled by trained staff only.

Applications

- Western Blot

Western blot analysis of Lane 1: A549, Lane 2: H460, Lane 3: H1703, Lane 4: 293, Lane 5: HeLA with JTV1 monoclonal antibody (MAB11292) at 1:1000 dilution.

Gene Info — JTV1

Entrez GeneID	7965
Gene Name	JTV1
Gene Alias	AIMP2, P38, PRO0992
Gene Description	JTV1 gene
Omim ID	600859
Gene Ontology	Hyperlink
Gene Summary	The JTV1 gene is located on chromosome 7p22 flanked by two genes, HRI and PMS2. JTV1 and HRI overlap slightly and are arranged in a tail-to-tail fashion. JTV1 and PMS2 are separated by a pproximately 200 base pairs and are arranged head-to-head. JTV1 is transcribed in the opposite direction compared to HRI and PMS2. The function of the JTV1 gene product is unknown. [provided by RefSeq]
Other Designations	ARS-interacting multi-functional protein 2

Disease

- [Genetic Predisposition to Disease](#)
- [Kidney Failure](#)
- [Lung Neoplasms](#)
- [Pulmonary Disease](#)
- [Urinary Bladder Neoplasms](#)
- [Werner syndrome](#)