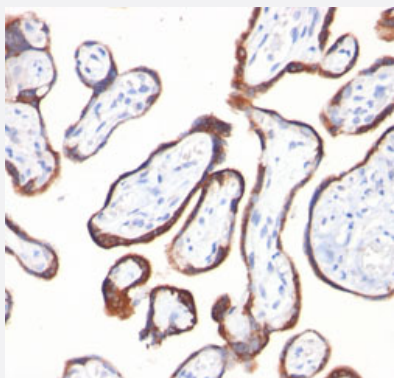


CGB monoclonal antibody, clone HCGb/54

Catalog # MAB11284 Size 100 ug

Applications



Immunohistochemistry (Formalin/PFA-fixed paraffin-embedded sections)

Immunohistochemical staining (Formalin-fixed paraffin-embedded sections) of human placenta with CGB monoclonal antibody, clone HCGb/54 (Cat # MAB11284) at 1:200 using peroxidase-conjugate and DAB chromogen.

Specification

Product Description	Mouse monoclonal antibody raised against CGB.
Immunogen	Recombinant protein corresponding to full length human CGB.
Host	Mouse
Reactivity	Human
Form	Liquid
Purification	Protein G affinity chromatography
Isotype	IgG1, kappa
Recommend Usage	Immunohistochemistry (Formalin/PFA-fixed paraffin-embedded sections) (1:200-1:400) The optimal working dilution should be determined by the end user.
Storage Buffer	In 0.2 mg/ml PBS (0.05% BSA, 0.05% sodium azide)
Storage Instruction	Store at 4°C. For long term storage store at -20°C. Aliquot to avoid repeated freezing and thawing.

Note

This product contains sodium azide: a POISONOUS AND HAZARDOUS SUBSTANCE which should be handled by trained staff only.

Applications

- Immunohistochemistry (Formalin/PFA-fixed paraffin-embedded sections)

Immunohistochemical staining (Formalin-fixed paraffin-embedded sections) of human placenta with CGB monoclonal antibody, clone HCGb/54 (Cat # MAB11284) at 1:200 using peroxidase-conjugate and DAB chromogen.

Gene Info — CGB

Entrez GeneID [1082](#)

Protein Accession# [NP_000728](#)

Gene Name CGB

Gene Alias CGB3, hCGB

Gene Description chorionic gonadotropin, beta polypeptide

Omim ID [118860](#)

Gene Ontology [Hyperlink](#)

Gene Summary This gene is a member of the glycoprotein hormone beta chain family and encodes the beta 3 subunit of chorionic gonadotropin (CG). Glycoprotein hormones are heterodimers consisting of a common alpha subunit and an unique beta subunit which confers biological specificity. CG is produced by the trophoblastic cells of the placenta and stimulates the ovaries to synthesize the steroids that are essential for the maintenance of pregnancy. The beta subunit of CG is encoded by 6 genes which are arranged in tandem and inverted pairs on chromosome 19q13.3 and contiguous with the luteinizing hormone beta subunit gene. [provided by RefSeq]

Other Designations chorionic gonadotropin beta 3 subunit|chorionic gonadotropin beta chain|chorionic gonadotropin beta subunit

Disease

- [Abortion](#)
- [Genetic Predisposition to Disease](#)