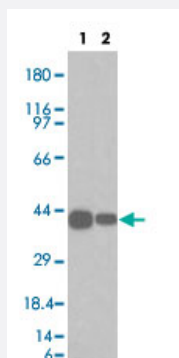


KRT19 monoclonal antibody, clone A53-B/A2.26

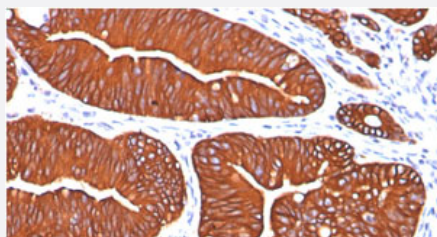
Catalog # MAB11278 Size 100 ug

Applications



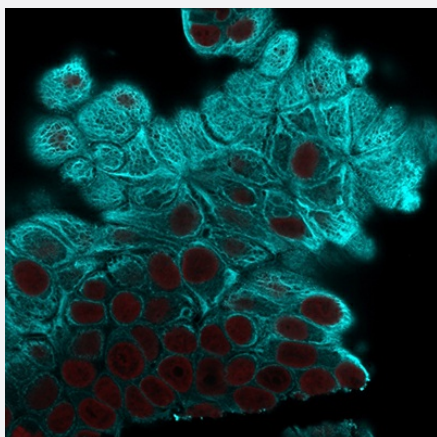
Western Blot (Cell lysate)

Western blot analysis of HepG2 and MCF7 cell lysates using KRT19 monoclonal antibody, clone A53-B/A2.26 (Cat # MAB11278) at 1 ug/ml.



Immunohistochemistry (Formalin/PFA-fixed paraffin-embedded sections)

Immunohistochemical staining (Formalin-fixed paraffin-embedded sections) of human colon cancer with KRT19 monoclonal antibody, clone A53-B/A2.26 (Cat # MAB11278) at 1:100 using peroxidase-conjugate and DAB chromogen.



Immunofluorescence

Immunofluorescence Analysis of MCF-7 cells labeling Cytokeratin 19 with KRT19 monoclonal antibody, clone A53-B/A2.26 (Cat # MAB11278) followed by Goat anti-mouse IgG-CF488 (Cyan). The nuclear counterstain is Reddot (Red).

Specification

Product Description	Mouse monoclonal antibody raised against KRT19.
Immunogen	Human breast cancer MCF-7 cells.
Host	Mouse
Theoretical MW (kDa)	40
Reactivity	Human
Specificity	This MAb reacts with the rod domain of human cytokeratin-19 (CK19), a polypeptide of 40 kDa. Its epitope maps between amino acid 312-335.
Form	Liquid
Purification	Protein A/G purification
Isotype	IgG2a, lambda
Recommend Usage	Flow Cytometry (0.5-1 ug/million cells) Immunofluorescence (1-2 ug/mL) Immunohistochemistry (Formalin/PFA-fixed paraffin-embedded sections) (1-2 ug/mL for 30 minutes at RT) (Staining of formalin-fixed tissues requires heating tissue sections in 10 mM Tris with 1 mM EDTA, pH 9.0, for 45 min at 95°C followed by cooling at RT for 20 minutes) Western Blot (1-2 ug/mL) The optimal working dilution should be determined by the end user.
Storage Buffer	In 10mM PBS (0.05% BSA, 0.05% sodium azide).
Storage Instruction	Store at 4°C.
Note	This product contains sodium azide: a POISONOUS AND HAZARDOUS SUBSTANCE which should be handled by trained staff only.

Applications

- Western Blot (Cell lysate)

Western blot analysis of HepG2 and MCF7 cell lysates using KRT19 monoclonal antibody, clone A53-B/A2.26 (Cat # MAB11278) at 1 ug/ml.

- Immunohistochemistry (Formalin/PFA-fixed paraffin-embedded sections)

Immunohistochemical staining (Formalin-fixed paraffin-embedded sections) of human colon cancer with KRT19 monoclonal antibody, clone A53-B/A2.26 (Cat # MAB11278) at 1:100 using peroxidase-conjugate and DAB chromogen.

- Immunofluorescence

Immunofluorescence Analysis of MCF-7 cells labeling Cytokeratin 19 with KRT19 monoclonal antibody, clone A53-B/A2.26 (Cat # MAB11278) followed by Goat anti-mouse IgG-CF488 (Cyan). The nuclear counterstain is Reddot (Red).

- Flow Cytometry

Gene Info — KRT19

Entrez GeneID [3880](#)

Protein Accession# [P08727](#)

Gene Name KRT19

Gene Alias CK19, K19, K1CS, MGC15366

Gene Description keratin 19

Omim ID [148020](#)

Gene Ontology [Hyperlink](#)

Gene Summary The protein encoded by this gene is a member of the keratin family. The keratins are intermediate filament proteins responsible for the structural integrity of epithelial cells and are subdivided into cytokeratins and hair keratins. The type I cytokeratins consist of acidic proteins which are arranged in pairs of heterotypic keratin chains. Unlike its related family members, this smallest known acidic cytokeratin is not paired with a basic cytokeratin in epithelial cells. It is specifically expressed in the periderm, the transiently superficial layer that envelopes the developing epidermis. The type I cytokeratins are clustered in a region of chromosome 17q12-q21. [provided by RefSeq]

Other Designations 40-kDa keratin intermediate filament|cytokeratin 19|keratin, type I cytoskeletal 19|keratin, type I, 40-kd

Disease

- [Liver Cirrhosis](#)