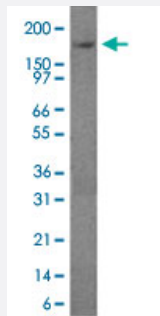


PODXL monoclonal antibody, clone 3D3

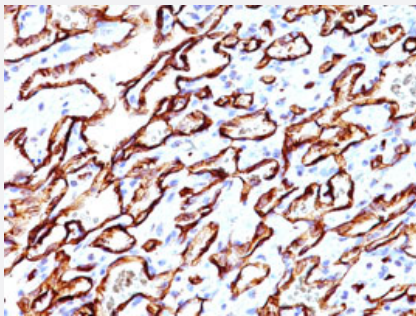
Catalog # MAB11270 Size 100 ug

Applications



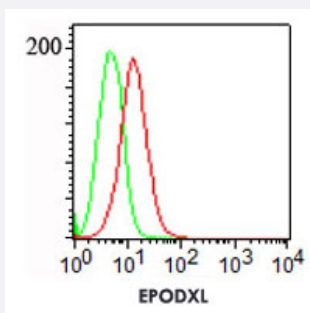
Western Blot (Cell lysate)

Western blot analysis of HeLa cell lysates by PODXL monoclonal antibody, clone 3D3 (Cat # MAB11270) at 3 ug/ml.



Immunohistochemistry (Formalin/PFA-fixed paraffin-embedded sections)

Immunohistochemical staining of human angiosarcoma (20X) with PODXL monoclonal antibody, clone 3D3 (Cat # MAB11270) at 1:500 dilution.



Flow Cytometry

Surface staining of NCCIT cells with PODXL monoclonal antibody, clone 3D3 (Cat # MAB11270) at 1 ug/10⁶ cells.

Specification

Product Description

Mouse monoclonal antibody raised against PODXL.

Immunogen	A mixture of recombinant protein corresponding to intracellular, transmembrane, and extracellular domain of human PODXL.
Host	Mouse
Reactivity	Human
Form	Liquid
Isotype	IgG1
Recommend Usage	Flow Cytometry (1-2 ug/10 ⁶ cells) Immunohistochemistry (Formalin/PFA-fixed paraffin-embedded sections) (1:500-1:1000) Western Blot (3-5 ug/ml) The optimal working dilution should be determined by the end user.
Storage Buffer	In PBS (0.05% BSA, 0.05% sodium azide)
Storage Instruction	Store at 4°C. For long term storage store at -20°C. Aliquot to avoid repeated freezing and thawing.
Note	This product contains sodium azide: a POISONOUS AND HAZARDOUS SUBSTANCE which should be handled by trained staff only.

Applications

- Western Blot (Cell lysate)

Western blot analysis of HeLa cell lysates by PODXL monoclonal antibody, clone 3D3 (Cat # MAB11270) at 3 ug/ml.

- Immunohistochemistry (Formalin/PFA-fixed paraffin-embedded sections)

Immunohistochemical staining of human angiosarcoma (20X) with PODXL monoclonal antibody, clone 3D3 (Cat # MAB11270) at 1:500 dilution.

- Immunofluorescence

- Immunoprecipitation

- Flow Cytometry

Surface staining of NCCIT cells with PODXL monoclonal antibody, clone 3D3 (Cat # MAB11270) at 1 ug/10⁶ cells.

Gene Info — PODXL

Entrez GeneID

[5420](#)

Gene Name	PODXL
Gene Alias	Gp200, MGC138240, PC, PCLP
Gene Description	podocalyxin-like
Omim ID	602632
Gene Ontology	Hyperlink
Gene Summary	<p>This gene encodes a member of the sialomucin protein family. The encoded protein was originally identified as an important component of glomerular podocytes. Podocytes are highly differentiated epithelial cells with interdigitating foot processes covering the outer aspect of the glomerular basement membrane. Other biological activities of the encoded protein include: binding in a membrane protein complex with Na⁺/H⁺ exchanger regulatory factor to intracellular cytoskeletal elements, playing a role in hematopoietic cell differentiation, and being expressed in vascular endothelium cells and binding to L-selectin. [provided by RefSeq]</p>
Other Designations	-

Disease

- [Genetic Predisposition to Disease](#)
- [Neoplasm Invasiveness](#)
- [Ovarian Neoplasms](#)
- [Prostate cancer](#)
- [Prostatic Neoplasms](#)