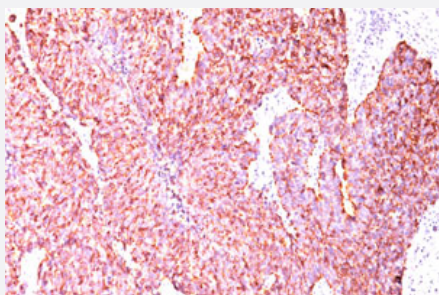


CHGA monoclonal antibody, clone PHE5

Catalog # MAB11247 Size 100 ug

Applications



Immunohistochemistry (Formalin/PFA-fixed paraffin-embedded sections)

Immunohistochemical staining (Formalin-fixed paraffin-embedded sections) of human small cell lung carcinoma using CHGA monoclonal antibody, clone PHE5 (Cat # MAB11247).

Specification

Product Description	Mouse monoclonal antibody raised against partial recombinant CHGA.
Immunogen	Recombinant protein corresponding to human CHGA.
Host	Mouse
Reactivity	Human
Form	Liquid
Purification	Protein A/G purification
Isotype	IgG1, kappa
Recommend Usage	Immunohistochemistry (Formalin/PFA-fixed paraffin-embedded sections) (0.5-1 ug/mL) The optimal working dilution should be determined by the end user.
Storage Buffer	In PBS (0.05% BSA, 0.05% sodium azide)
Storage Instruction	Store at 4°C.
Note	This product contains sodium azide: a POISONOUS AND HAZARDOUS SUBSTANCE which should be handled by trained staff only.

Applications

- Immunohistochemistry (Formalin/PFA-fixed paraffin-embedded sections)

Immunohistochemical staining (Formalin-fixed paraffin-embedded sections) of human small cell lung carcinoma using CHGA monoclonal antibody, clone PHE5 (Cat # MAB11247).

Gene Info — CHGA

Entrez GeneID	1113
Protein Accession#	NP_001266
Gene Name	CHGA
Gene Alias	CGA
Gene Description	chromogranin A (parathyroid secretory protein 1)
Omim ID	118910
Gene Ontology	Hyperlink
Gene Summary	The protein encoded by this gene is a member of the chromogranin/secretogranin family of neuro endocrine secretory proteins. It is found in secretory vesicles of neurons and endocrine cells. This gene product is a precursor to three biologically active peptides; vasostatin, pancreastatin, and parastatin. These peptides act as autocrine or paracrine negative modulators of the neuroendocrine system. Other peptides, including chromostatin, beta-granin, WE-14 and GE-25, are also derived from the full-length protein. However, biological activities for these molecules have not been shown. [provided by RefSeq]
Other Designations	betagranin (N-terminal fragment of chromogranin A) chromogranin A parathyroid secretory protein 1

Disease

- [Genetic Predisposition to Disease](#)
- [Glomerulonephritis](#)
- [Hypertension](#)
- [Kidney Failure](#)

- [Prostatic Neoplasms](#)
- [Schizophrenia](#)