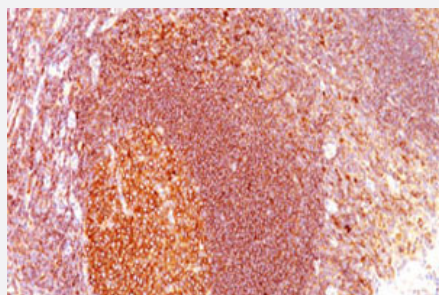


MALT1 monoclonal antibody, clone MT1/410

Catalog # MAB11232 Size 100 ug

Applications



Immunohistochemistry (Formalin/PFA-fixed paraffin-embedded sections)

Immunohistochemical staining (Formalin-fixed paraffin-embedded sections) of human tonsil tissue using MALT1 monoclonal antibody, clone MT1/410 (Cat # MAB11232).

Specification

Product Description	Mouse monoclonal antibody raised against MALT1.
Immunogen	Recombinant protein corresponding to human MALT1.
Host	Mouse
Reactivity	Human
Form	Liquid
Purification	Protein G affinity chromatography
Isotype	IgG1, kappa
Recommend Usage	Immunohistochemistry (Formalin/PFA-fixed paraffin-embedded sections) (1:200-1:400) The optimal working dilution should be determined by the end user.
Storage Buffer	In PBS (0.05% BSA, 0.05% sodium azide)
Storage Instruction	Store at 4°C. For long term storage store at -20°C. Aliquot to avoid repeated freezing and thawing.

Note

This product contains sodium azide: a POISONOUS AND HAZARDOUS SUBSTANCE which should be handled by trained staff only.

Applications

- Immunohistochemistry (Formalin/PFA-fixed paraffin-embedded sections)

Immunohistochemical staining (Formalin-fixed paraffin-embedded sections) of human tonsil tissue using MALT1 monoclonal antibody, clone MT1/410 (Cat # MAB11232).

Gene Info — MALT1

Entrez GeneID [10892](#)

Protein Accession# [NP_006776](#)

Gene Name MALT1

Gene Alias DKFZp434L132, MLT, MLT1

Gene Description mucosa associated lymphoid tissue lymphoma translocation gene 1

Omim ID [604860](#)

Gene Ontology [Hyperlink](#)

Gene Summary This gene has been found to be recurrently rearranged in chromosomal translocation with two other genes - baculoviral IAP repeat-containing protein 3 (also known as apoptosis inhibitor 2) and immunoglobulin heavy chain locus - in mucosa-associated lymphoid tissue lymphomas. The protein encoded by this gene may play a role in NF-kappaB activation. Two alternatively spliced transcript variants encoding different isoforms have been described for this gene. [provided by RefSeq]

Other Designations MALT associated translocation|MALT-lymphoma associated translocation|caspase-like protein|mucosa associated lymphoid tissue lymphoma translocation protein 1|paracaspase

Pathway

- [B cell receptor signaling pathway](#)
- [T cell receptor signaling pathway](#)

Disease

- [Gastritis](#)
- [Genetic Predisposition to Disease](#)
- [Helicobacter Infections](#)
- [Lymphoma](#)
- [Stomach Neoplasms](#)