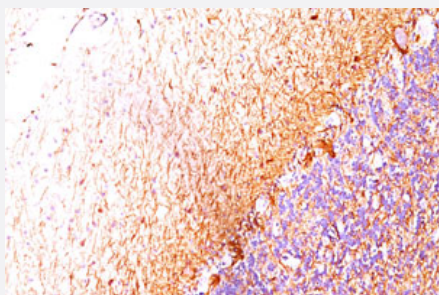


# NEFH monoclonal antibody, clone NF421

Catalog # MAB11229      Size 100 ug

## Applications



### Immunohistochemistry (Formalin/PFA-fixed paraffin-embedded sections)

Immunohistochemical staining (Formalin-fixed paraffin-embedded sections) of human cerebellum using NEFH monoclonal antibody, clone NF421 (Cat # MAB11229).

## Specification

|                            |  |
|----------------------------|--|
| <b>Product Description</b> | Mouse monoclonal antibody raised against NEFH.   |
| <b>Immunogen</b>           | The Triton-X 100 insoluble protein fraction from rat brain.  |
| <b>Host</b>                | Mouse  |
| <b>Reactivity</b>          | Human, Rat   |
| <b>Form</b>                | Liquid   |
| <b>Purification</b>        | Protein G affinity chromatography  |
| <b>Isotype</b>             | IgG1, kappa  |
| <b>Recommend Usage</b>     | Immunohistochemistry (Formalin/PFA-fixed paraffin-embedded sections) (1:200-1:400)<br>The optimal working dilution should be determined by the end user. |
| <b>Storage Buffer</b>      | In PBS (0.05% BSA, 0.05% sodium azide)   |
| <b>Storage Instruction</b> | Store at 4°C. For long term storage store at -20°C.<br>Aliquot to avoid repeated freezing and thawing.   |

## Note

This product contains sodium azide: a POISONOUS AND HAZARDOUS SUBSTANCE which should be handled by trained staff only.

## Applications

- Immunohistochemistry (Formalin/PFA-fixed paraffin-embedded sections)

Immunohistochemical staining (Formalin-fixed paraffin-embedded sections) of human cerebellum using NEFH monoclonal antibody, clone NF421 (Cat # MAB11229).

## Gene Info — NEFH

Entrez GeneID [4744](#)

Protein Accession# [NP\\_066554](#)

Gene Name NEFH

Gene Alias NFH

Gene Description neurofilament, heavy polypeptide

Omim ID [105400 162230](#)

Gene Ontology [Hyperlink](#)

**Gene Summary** Neurofilaments are type IV intermediate filament heteropolymers composed of light, medium, and heavy chains. Neurofilaments comprise the axoskeleton and functionally maintain neuronal caliber. They may also play a role in intracellular transport to axons and dendrites. This gene encodes the heavy neurofilament protein. This protein is commonly used as a biomarker of neuronal damage and susceptibility to amyotrophic lateral sclerosis (ALS) has been associated with mutations in this gene. [provided by RefSeq]

**Other Designations** neurofilament triplet H protein|neurofilament, heavy polypeptide 200kDa

## Pathway

- [Amyotrophic lateral sclerosis \(ALS\)](#)

## Disease

- [Amyotrophic lateral sclerosis](#)

- [Dominance](#)
- [Genetic Predisposition to Disease](#)
- [Motor Neuron Disease](#)
- [Multiple Sclerosis](#)
- [Schizophrenia](#)