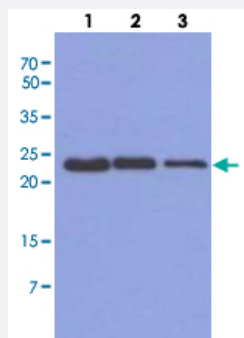


# TNNI1 monoclonal antibody, clone AT36E7

Catalog # MAB11204      Size 100 uL

## Applications



### Western Blot (Tissue lysate)

Western blot analysis of Mouse muscle extract (40 ug) by using TNNI1 monoclonal antibody, clone AT36E7 (Cat # MAB11204) (1:500-1:5000). Proteins were visualized using a goat anti-mouse secondary antibody conjugated to HRP and an ECL detection system. Lane 1: 1:500. Lane 2: 1:1000. Lane 3: 1:5000.

## Specification

<b>Product Description</b>	Mouse monoclonal antibody raised against partial recombinant TNNI1.
<b>Immunogen</b>	Recombinant protein corresponding to amino acids 1-187 of human TNNI1.
<b>Host</b>	Mouse
<b>Reactivity</b>	Human
<b>Form</b>	Liquid
<b>Purification</b>	Protein A purification
<b>Concentration</b>	1 mg/mL
<b>Isotype</b>	IgG2b, kappa
<b>Recommend Usage</b>	ELISA Western Blot The optimal working dilution should be determined by the end user.
<b>Storage Buffer</b>	In PBS, pH 7.4 (10% glycerol, 0.02% sodium azide).

**Storage Instruction**

Store at 2°C to 8°C for 1 week. For long term storage, aliquot and store at -20°C to -80°C. Aliquot to avoid repeated freezing and thawing.

**Note**

This product contains sodium azide: a POISONOUS AND HAZARDOUS SUBSTANCE which should be handled by trained staff only.

## Applications

- Western Blot (Tissue lysate)

Western blot analysis of Mouse muscle extract (40 ug) by using TNNI1 monoclonal antibody, clone AT36E7 (Cat # MAB11204) (1:500-1:5000). Proteins were visualized using a goat anti-mouse secondary antibody conjugated to HRP and an ECL detection system. Lane 1: 1:500. Lane 2: 1:1000. Lane 3: 1:5000.

- Enzyme-linked Immunoabsorbent Assay

## Gene Info — TNNI1

**Entrez GeneID**[7135](#)**Protein Accession#**[NP\\_003272](#)**Gene Name**

TNNI1

**Gene Alias**

DKFZp451O223, SSTNI, TNN1

**Gene Description**

troponin I type 1 (skeletal, slow)

**Omim ID**[191042](#)**Gene Ontology**[Hyperlink](#)**Gene Summary**

Troponin proteins associate with tropomyosin and regulate the calcium sensitivity of the myofibril contractile apparatus of striated muscles. Troponin I (TnI), along with troponin T (TnT) and troponin C (TnC), is one of 3 subunits that form the troponin complex of the thin filaments of striated muscle. TnI is the inhibitory subunit; blocking actin-myosin interactions and thereby mediating striated muscle relaxation. The TnI subfamily contains three genes: TnI-skeletal-fast-twitch, TnI-skeletal-slow-twitch, and TnI-cardiac. The TnI-fast and TnI-slow genes are expressed in fast-twitch and slow-twitch skeletal muscle fibers, respectively, while the TnI-cardiac gene is expressed exclusively in cardiac muscle tissue. This gene encodes the Troponin-I-skeletal-slow-twitch protein. This gene is expressed in cardiac and skeletal muscle during early development but is restricted to slow-twitch skeletal muscle fibers in adults. The encoded protein prevents muscle contraction by inhibiting calcium-mediated conformational changes in actin-myosin complexes. [provided by RefSeq]

**Other Designations**

OTTHUMP00000033877|OTTHUMP00000033910|slow-twitch skeletal troponin I|troponin I, skeletal, slow