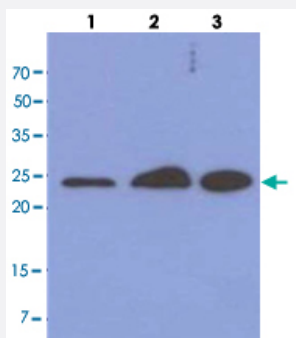


MRRF monoclonal antibody, clone AT7D10

Catalog # MAB11203 Size 100 uL

Applications



Western Blot (Cell lysate)

Western blot analysis of cell lysates (each 40 ug) by MRRF monoclonal antibody, clone AT7D10 (Cat # MAB11203) (1:1000). Proteins were visualized using a goat anti-mouse secondary antibody conjugated to HRP and an ECL detection system. Lane 1: HepG2 cell lysate. Lane 2: 293T cell lysate. Lane 3: HeLa cell lysate.

Specification

Product Description	Mouse monoclonal antibody raised against partial recombinant MRRF.
Immunogen	Recombinant protein corresponding to amino acids 56-262 of human MRRF.
Host	Mouse
Reactivity	Human
Form	Liquid
Purification	Protein A purification
Concentration	1 mg/mL
Isotype	IgG1, kappa
Recommend Usage	ELISA Western Blot The optimal working dilution should be determined by the end user.
Storage Buffer	In PBS, pH 7.4 (10% glycerol, 0.02% sodium azide).

Storage Instruction

Store at 2°C to 8°C for 1 week. For long term storage, aliquot and store at -20°C to -80°C.
Aliquot to avoid repeated freezing and thawing.

Note

This product contains sodium azide: a POISONOUS AND HAZARDOUS SUBSTANCE which should be handled by trained staff only.

Applications

- Western Blot (Cell lysate)

Western blot analysis of cell lysates (each 40 ug) by MRRF monoclonal antibody, clone AT7D10 (Cat # MAB11203) (1:1000). Proteins were visualized using a goat anti-mouse secondary antibody conjugated to HRP and an ECL detection system. Lane 1: HepG2 cell lysate. Lane 2: 293T cell lysate. Lane 3: HeLa cell lysate.

- Enzyme-linked Immunoabsorbent Assay

Gene Info — MRRF

Entrez GeneID [92399](#)

Protein Accession# [NP_620132](#)

Gene Name MRRF

Gene Alias MRFF, MTRRF, RRF

Gene Description mitochondrial ribosome recycling factor

Omim ID [604602](#)

Gene Ontology [Hyperlink](#)

Other Designations OTTHUMP00000022037

Disease

- [Tobacco Use Disorder](#)