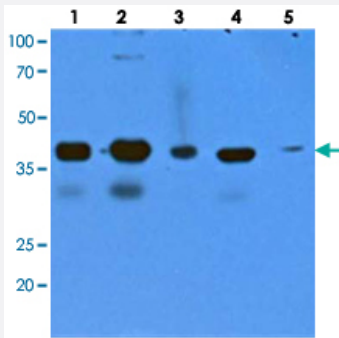


GIPC2 monoclonal antibody, clone AT1G10

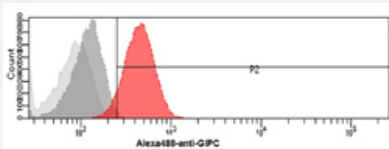
Catalog # MAB11190 Size 100 uL

Applications



Western Blot (Cell lysate)

Western blot analysis of recombinant human GIPC1, 2 (each 20 ng) and cell lysates (40 ug) by using GIPC2 monoclonal antibody, clone AT1G10 (Cat # MAB11190) (1:1000). Lane1 : GIPC1. Lane2 : GIPC2. Lane 3 : 293T. Lane 4 : HepG2. Lane 5 : HeLa.



Flow Cytometry

Flow cytometry analysis of GIPC in HeLa cells, The cell was stained with GIPC2 monoclonal antibody, clone AT1G10 (Cat # MAB11190) at 2-5 ug for 1x10⁶ cells (red). A Goat anti mouse IgG (Alexa fluor 488) was used as the secondary antibody. Mouse monoclonal IgG was used as the isotype control (dark gray), cells without incubation with primary and secondary antibody was used as the negative control (light gray).

Specification

Product Description	Mouse monoclonal antibody raised against partial recombinant GIPC2.
Immunogen	Recombinant protein corresponding to amino acids 1-315 of human GIPC2.
Host	Mouse
Reactivity	Human
Form	Liquid
Purification	Protein G purification

Concentration	1 mg/mL
Isotype	IgG1, kappa
Recommend Usage	ELISA Flow Cytometry Western Blot The optimal working dilution should be determined by the end user.
Storage Buffer	In PBS, pH 7.4 (10% glycerol, 0.02% sodium azide).
Storage Instruction	Store at 2°C to 8°C for 1 week. For long term storage, aliquot and store at -20°C to -80°C. Aliquot to avoid repeated freezing and thawing.
Note	This product contains sodium azide: a POISONOUS AND HAZARDOUS SUBSTANCE which should be handled by trained staff only.

Applications

- Western Blot (Cell lysate)

Western blot analysis of recombinant human GIPC1, 2 (each 20 ng) and cell lysates (40 ug) by using GIPC2 monoclonal antibody, clone AT1G10 (Cat # MAB11190) (1:1000). Lane1 : GIPC1. Lane2 : GIPC2. Lane 3 : 293T. Lane 4 : HepG2. Lane 5 : HeLa.

- Enzyme-linked Immunoabsorbent Assay

- Flow Cytometry

Flow cytometry analysis of GIPC in HeLa cells, The cell was stained with GIPC2 monoclonal antibody, clone AT1G10 (Cat # MAB11190) at 2-5 ug for 1×10^6 cells (red). A Goat anti mouse IgG (Alexa fluor 488) was used as the secondary antibody. Mouse monoclonal IgG was used as the isotype control (dark gray), cells without incubation with primary and secondary antibody was used as the negative control (light gray).

Gene Info — GIPC2

Entrez GeneID	54810
Protein Accession#	NP_060125.4
Gene Name	GIPC2
Gene Alias	FLJ20075, SEMCAP-2, SEMCAP2
Gene Description	GIPC PDZ domain containing family, member 2
Gene Ontology	Hyperlink

Gene Summary

O

Other Designations

OTTHUMP00000038608|PDZ domain protein GIPC2|semaF cytoplasmic domain associated protein 2|semaphorin cytoplasmic domain associated protein 2

Disease

- [Cleft Lip](#)
- [Cleft Palate](#)
- [Kidney Failure](#)
- [Tooth Abnormalities](#)