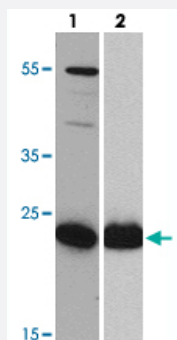


HIV-1 p24 monoclonal antibody, clone 7F4

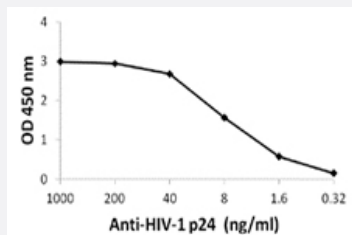
Catalog # MAB11187 Size 100 ug

Applications



Western Blot (Recombinant protein)

Western blot analysis of HIV-1 p24 with HIV-1 p24 monoclonal antibody (Cat # MAB11187) at (lane 1) 0.5 ug/mL and (lane 2) 0.2 ug/mL, respectively.



Enzyme-linked Immunoabsorbent Assay

ELISA analysis of HIV-1 p24 with HIV-1 p24 monoclonal antibody (Cat # MAB11187).

Specification

Product Description	Mouse monoclonal antibody raised against full length recombinant HIV-1 p24.
Immunogen	Recombinant protein corresponding to human immunodeficiency virus type 1 p24.
Host	Mouse
Reactivity	Human
Specificity	By Western blot, anti-HIV-1 p24 antibody detects a ~24 kDa, a ~41 kDa, and a ~55 kDa protein, corresponding to HIV-1 p24 and to its precursors p41 and p55, respectively, in HIV-1 samples.
Form	Liquid

Purification	Peptide affinity purification
Concentration	1 mg/mL
Recommend Usage	Western Blot (0.5-0.2 ug/mL) ELISA (0.5-0.2 ug/mL) The optimal working dilution should be determined by the end user.
Storage Buffer	In PBS (0.02% sodium azide)
Storage Instruction	Store at 4°C for three months. For long term storage store at -20°C. Aliquot to avoid repeated freezing and thawing.
Note	This product contains sodium azide: a POISONOUS AND HAZARDOUS SUBSTANCE which should be handled by trained staff only.

Applications

- Western Blot (Recombinant protein)

Western blot analysis of HIV-1 p24 with HIV-1 p24 monoclonal antibody (Cat # MAB11187) at (lane 1) 0.5 ug/mL and (lane 2) 0.2 ug/mL, respectively.

- Enzyme-linked Immunoabsorbent Assay

ELISA analysis of HIV-1 p24 with HIV-1 p24 monoclonal antibody (Cat # MAB11187).

- Enzyme-linked Immunoabsorbent Assay