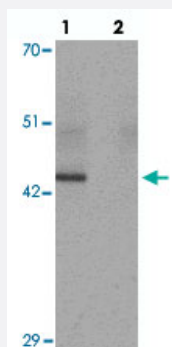


KLF4 monoclonal antibody, clone 4E5C3

Catalog # MAB11171

Size 100 ug

Applications



Western Blot (Tissue lysate)

Western blot analysis of KLF4 in mouse liver tissue with KLF4 monoclonal antibody, clone 4E5C3 (Cat # MAB11171) at 1 ug/mL in (lane 1) the absence and (lane 2) the presence of blocking peptide.

Specification

Product Description	Mouse monoclonal antibody raised against KLF4.
Immunogen	A synthetic peptide corresponding to 20 amino acids at C-terminus of human KLF4.
Host	Mouse
Reactivity	Human, Mouse, Rat
Specificity	At least three isoforms of KLF4 are known to exist; this antibody will detect all three. KLF4 antibody will not cross-react with other Kruppel-like family members.
Form	Liquid
Purification	Peptide affinity purification
Concentration	1 mg/mL
Isotype	IgG1
Recommend Usage	Western Blot (1 ug/mL) The optimal working dilution should be determined by the end user.
Storage Buffer	In PBS (0.02% sodium azide)

Storage Instruction	Store at -20°C, stable for one year.
Note	This product contains sodium azide: a POISONOUS AND HAZARDOUS SUBSTANCE which should be handled by trained staff only.

Applications

- Western Blot (Tissue lysate)

Western blot analysis of KLF4 in mouse liver tissue with KLF4 monoclonal antibody, clone 4E5C3 (Cat # MAB11171) at 1 ug/mL in (lane 1) the absence and (lane 2) the presence of blocking peptide.

- Enzyme-linked Immunoabsorbent Assay

Gene Info — KLF4

Entrez GeneID	9314
Protein Accession#	AAH30811
Gene Name	KLF4
Gene Alias	EZF, GKLF
Gene Description	Kruppel-like factor 4 (gut)
Omim ID	602253
Gene Ontology	Hyperlink
Other Designations	OTTHUMP00000021862 endothelial Kruppel-like zinc finger protein

Disease

- [Diabetes Mellitus](#)
- [Genetic Predisposition to Disease](#)