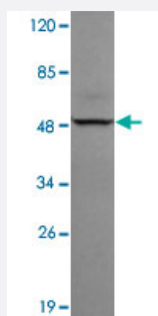


# KRT19 monoclonal antibody, clone 4E12

Catalog # MAB11169      Size 100 ug

## Applications



### Western Blot (Cell lysate)

Western blot analysis of HepG2 whole cell lysate 40 ug/lane using KRT19 monoclonal antibody clone 4E12 (Cat # MAB11169) at 1:1000 dilution.

## Specification

<b>Product Description</b>	Mouse monoclonal antibody raised against partial recombinant KRT19.
<b>Immunogen</b>	Recombinant protein corresponding to amino acids 240-390 of human KRT19.
<b>Host</b>	Mouse
<b>Reactivity</b>	Human
<b>Form</b>	Liquid
<b>Purification</b>	Protein G purification
<b>Concentration</b>	1 mg/mL
<b>Recommend Usage</b>	Western Blot (1:500-1:1000) ELISA (1:5000-1:20000) The optimal working dilution should be determined by the end user.
<b>Storage Buffer</b>	In PBS, 150 mM NaCl, pH 7.4 (50% glycerol, 0.02% sodium azide)
<b>Storage Instruction</b>	Store at -20°C. Aliquot to avoid repeated freezing and thawing.

**Note**

This product contains sodium azide: a POISONOUS AND HAZARDOUS SUBSTANCE which should be handled by trained staff only.

## Applications

- Western Blot (Cell lysate)

Western blot analysis of HepG2 whole cell lysate 40 ug/lane using KRT19 monoclonal antibody clone 4E12 (Cat # MAB11169) at 1:1000 dilution.

- Enzyme-linked Immunoabsorbent Assay

## Gene Info — KRT19

Entrez GeneID [3880](#)

Protein Accession# [P08727](#)

Gene Name KRT19

Gene Alias CK19, K19, K1CS, MGC15366

Gene Description keratin 19

Omim ID [148020](#)

Gene Ontology [Hyperlink](#)

**Gene Summary**

The protein encoded by this gene is a member of the keratin family. The keratins are intermediate filament proteins responsible for the structural integrity of epithelial cells and are subdivided into cytokeratins and hair keratins. The type I cytokeratins consist of acidic proteins which are arranged in pairs of heterotypic keratin chains. Unlike its related family members, this smallest known acidic cytokeratin is not paired with a basic cytokeratin in epithelial cells. It is specifically expressed in the periderm, the transiently superficial layer that envelopes the developing epidermis. The type I cytokeratins are clustered in a region of chromosome 17q12-q21. [provided by RefSeq]

**Other Designations** 40-kDa keratin intermediate filament|cytokeratin 19|keratin, type I cytoskeletal 19|keratin, type I, 40-kd

## Disease

- [Liver Cirrhosis](#)