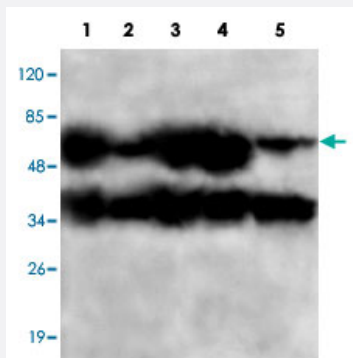


PPP2CB monoclonal antibody

Catalog # MAB11161 Size 50 ug

Applications



Western Blot (Cell lysate)

Western blot analysis of PPP2CB monoclonal antibody (Cat # MAB11161) at 1:1000 dilution.

Lane 1: A-549 whole cell lysate 40 ug/lane.

Lane 2: A-431 whole cell lysate 40 ug/lane (EGF).

Lane 3: T-47D whole cell lysate 40 ug/lane.

Lane 4: K-562 whole cell lysate 40 ug/lane.

Lane 5: HeLa whole cell lysate 40 ug/lane.

Predicted band size: 74 KDa. Observed band size: 74 KDa. Additional band size: 40 KDa

Specification

Product Description Mouse monoclonal antibody raised against partial recombinant protein of PPP2CB.

Immunogen Recombinant protein corresponding to C-terminus of human PPP2CB.

Host Mouse

Reactivity Human

Form Liquid

Purification Protein G purification

Recommend Usage ELISA (1:5000-1:20000)
Western Blot (1:100-1:2000)
The optimal working dilution should be determined by the end user.

Storage Buffer In PBS, pH 7.4 (50% glycerol, 0.02% sodium azide)

Storage Instruction

Store at -20°C.
Aliquot to avoid repeated freezing and thawing.

Note

This product contains sodium azide: a POISONOUS AND HAZARDOUS SUBSTANCE which should be handled by trained staff only.

Applications

- Western Blot (Cell lysate)

Western blot analysis of PPP2CB monoclonal antibody (Cat # MAB11161) at 1:1000 dilution.

Lane 1: A-549 whole cell lysate 40 ug/lane.

Lane 2: A-431 whole cell lysate 40 ug/lane (EGF).

Lane 3: T-47D whole cell lysate 40 ug/lane.

Lane 4: K-562 whole cell lysate 40 ug/lane.

Lane 5: HeLa whole cell lysate 40 ug/lane.

Predicted band size: 74 KDa. Observed band size: 74 KDa. Additional band size: 40 KDa

- Enzyme-linked Immunoabsorbent Assay

Gene Info — PPP2CB

Entrez GeneID [5516](#)

Protein Accession# [P62714;NM_001009552.1](#)

Gene Name PPP2CB

Gene Alias PP2CB

Gene Description protein phosphatase 2 (formerly 2A), catalytic subunit, beta isoform

Omim ID [176916](#)

Gene Ontology [Hyperlink](#)

Gene Summary This gene encodes the phosphatase 2A catalytic subunit. Protein phosphatase 2A is one of the four major Ser/Thr phosphatases, and it is implicated in the negative control of cell growth and division. It consists of a common heteromeric core enzyme, which is composed of a catalytic subunit and a constant regulatory subunit, that associates with a variety of regulatory subunits. This gene encodes a beta isoform of the catalytic subunit. Two transcript variants encoding the same protein have been identified for this gene. [provided by RefSeq]

Other Designations PP2A-beta|protein phosphatase 2, catalytic subunit, beta isoform|protein phosphatase type 2A catalytic subunit|serine/threonine protein phosphatase 2A, catalytic subunit, beta isoform

Pathway

- [Long-term depression](#)
- [TGF-beta signaling pathway](#)
- [Tight junction](#)
- [Wnt signaling pathway](#)