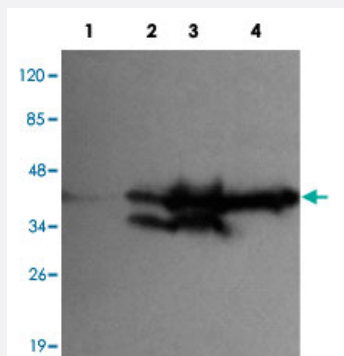


EPCAM monoclonal antibody

Catalog # MAB11144 Size 100 ug

Applications



Western Blot (Cell lysate)

Western blot analysis of EPCAM monoclonal antibody (Cat # MAB11144) at 1:1000 dilution.

Lane 1: HepG-2 whole cell lysate 40 ug/lane.

Lane 2: A-431 whole cell lysate 40 ug/lane.

Lane 3: MCF-7 whole cell lysate 40 ug/lane.

Lane 4: HCT116 whole cell lysate 40 ug/lane.

Predicted band size: 39 KDa. Observed band size: 39 KDa. Addition band size: 34 KDa.

Specification

Product Description Mouse monoclonal antibody raised against partial recombinant protein of EPCAM.

Immunogen Recombinant protein corresponding to N-terminus of human EPCAM.

Host Mouse

Reactivity Human

Form Liquid

Purification Protein G purification

Recommend Usage ELISA (1:5000-1:20000)
Western Blot (1:100-1:2000)
The optimal working dilution should be determined by the end user.

Storage Buffer In PBS, pH 7.4 (50% glycerol, 0.02% sodium azide)

Storage Instruction Store at -20°C.
Aliquot to avoid repeated freezing and thawing.

Note

This product contains sodium azide: a POISONOUS AND HAZARDOUS SUBSTANCE which should be handled by trained staff only.

Applications

- Western Blot (Cell lysate)

Western blot analysis of EPCAM monoclonal antibody (Cat # MAB11144) at 1:1000 dilution.

Lane 1: HepG-2 whole cell lysate 40 ug/lane.

Lane 2: A-431 whole cell lysate 40 ug/lane.

Lane 3: MCF-7 whole cell lysate 40 ug/lane.

Lane 4: HCT116 whole cell lysate 40 ug/lane.

Predicted band size: 39 KDa. Observed band size: 39 KDa. Addition band size: 34 KDa.

- Enzyme-linked Immunoabsorbent Assay

Gene Info — EPCAM

Entrez GeneID [4072](#)

Protein Accession# [P16422;NM_002354.1](#)

Gene Name EPCAM

Gene Alias 17-1A, 323/A3, CD326, CO-17A, CO17-1A, EGP, EGP-2, EGP34, EGP40, ESA, Ep-CAM, GA733-2, HEA125, KS1/4, KSA, M4S1, MH99, MIC18, MK-1, MOC31, TACST-1, TACSTD1, TROP1, hEGP-2

Gene Description epithelial cell adhesion molecule

Omim ID [185535](#)

Gene Ontology [Hyperlink](#)

Gene Summary This gene encodes a carcinoma-associated antigen and is a member of a family that includes at least two type I membrane proteins. This antigen is expressed on most normal epithelial cells and gastrointestinal carcinomas and functions as a homotypic calcium-independent cell adhesion molecule. The antigen is being used as a target for immunotherapy treatment of human carcinomas. Mutations in this gene result in congenital tufting enteropathy. [provided by RefSeq]

Other Designations adenocarcinoma-associated antigen|carcinoma-associated antigen GA733-2|human epithelial glycoprotein-2|membrane component, chromosome 4, surface marker (35kD glycoprotein)|tumor-associated calcium signal transducer 1

Disease

- [Genetic Predisposition to Disease](#)
- [Ovarian Neoplasms](#)