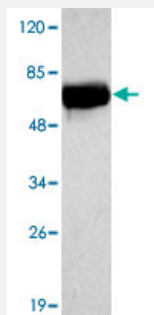


ALB monoclonal antibody

Catalog # MAB11139 Size 100 ug

Applications



Western Blot (Tissue lysate)

Western blot analysis of human blood plasma 0.025 uL/lane with ALB monoclonal antibody (Cat # MAB11139) at 1:2000 dilution. Predicted band size: 70 KDa. Observed band size: 70 KDa.

Specification

Product Description	Mouse monoclonal antibody raised against of ALB.
Immunogen	Human ALB.
Host	Mouse
Reactivity	Human
Form	Liquid
Purification	Protein G purification
Recommend Usage	ELISA (1:5000-1:20000) Western Blot (1:100-1:2000) The optimal working dilution should be determined by the end user.
Storage Buffer	In PBS, pH 7.4 (50% glycerol, 0.02% sodium azide)
Storage Instruction	Store at -20°C. Aliquot to avoid repeated freezing and thawing.
Note	This product contains sodium azide: a POISONOUS AND HAZARDOUS SUBSTANCE which should be handled by trained staff only.

Applications

- Western Blot (Tissue lysate)

Western blot analysis of human blood plasma 0.025 uL/lane with ALB monoclonal antibody (Cat # MAB11139) at 1:2000 dilution.

Predicted band size: 70 KDa. Observed band size: 70 KDa.

- Enzyme-linked Immunoabsorbent Assay

Gene Info — ALB

Entrez GeneID	213
Protein Accession#	NM_000477.3
Gene Name	ALB
Gene Alias	DKFZp779N1935, PRO0883, PRO0903, PRO1341
Gene Description	albumin
Omim ID	103600 194470
Gene Ontology	Hyperlink
Gene Summary	Albumin is a soluble, monomeric protein which comprises about one-half of the blood serum protein. Albumin functions primarily as a carrier protein for steroids, fatty acids, and thyroid hormones and plays a role in stabilizing extracellular fluid volume. Albumin is a globular unglycosylated serum protein of molecular weight 65,000. Albumin is synthesized in the liver as preproalbumin which has an N-terminal peptide that is removed before the nascent protein is released from the rough endoplasmic reticulum. The product, proalbumin, is in turn cleaved in the Golgi vesicles to produce the secreted albumin. [provided by RefSeq]
Other Designations	cell growth inhibiting protein 42 growth-inhibiting protein 20 serum albumin

Disease

- [Alzheimer disease](#)
- [Diabetes Mellitus](#)
- [Hepatitis](#)