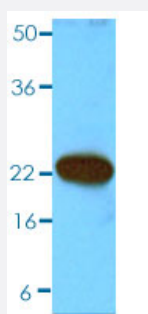


# CIB1 monoclonal antibody, clone 1D1

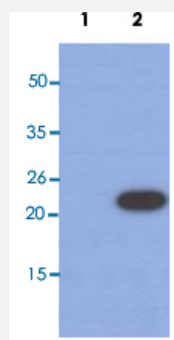
Catalog # MAB1113      Size 100 uL

## Applications



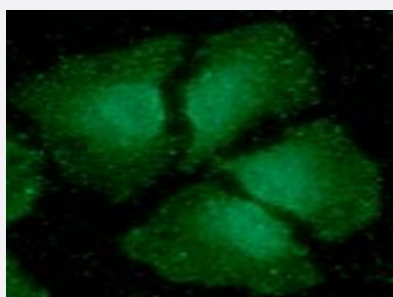
### Western Blot (Cell lysate)

Western blot analysis of HT-29 cell lysate.



### Western Blot (Transfected lysate)

Western blot analysis of Lane 1: 293T cell lysate; Lane 2: CIB1 Transfected 293T cell lysate.



### Immunofluorescence

Immunofluorescence analysis of HeLa cells. The cell was stained with CIB1 monoclonal antibody, clone 1D1 (1:100). The secondary antibody (green) was used Alexa Fluor 488. DAPI was stained the cell nucleus (blue).

## Specification

### Product Description

Mouse monoclonal antibody raised against full length recombinant CIB1.

### Immunogen

Recombinant protein corresponding to full length human CIB1.

Host	Mouse
Reactivity	Human
Form	Liquid
Purification	Protein G purification
Isotype	IgG2b, kappa
Recommend Usage	ELISA Immunocytochemistry Immunofluorescence Western Blot The optimal working dilution should be determined by the end user.
Storage Buffer	In PBS, pH 7.4 (10% glycerol, 0.02% sodium azide).
Storage Instruction	Store at 2°C to 8°C for 1 week. For long term storage, aliquot and store at -20°C to -80°C. Aliquot to avoid repeated freezing and thawing.
Note	This product contains sodium azide: a POISONOUS AND HAZARDOUS SUBSTANCE which should be handled by trained staff only.

## Applications

- Western Blot (Cell lysate)

Western blot analysis of HT-29 cell lysate.

- Western Blot (Transfected lysate)

Western blot analysis of Lane 1: 293T cell lysate; Lane 2: CIB1 Transfected 293T cell lysate.

- Immunocytochemistry

- Immunofluorescence

Immunofluorescence analysis of HeLa cells. The cell was stained with CIB1 monoclonal antibody, clone 1D1 (1:100). The secondary antibody (green) was used Alexa Fluor 488. DAPI was stained the cell nucleus (blue).

- Enzyme-linked Immunoabsorbent Assay

## Gene Info — CIB1

Entrez GeneID

[10519](#)

GeneBank Accession#	<a href="#">NM_006384</a>
Protein Accession#	<a href="#">NP_006375</a>
Gene Name	CIB1
Gene Alias	CIB, KIP, KIP1, SIP2-28
Gene Description	calcium and integrin binding 1 (calmyrin)
Omim ID	<a href="#">602293</a>
Gene Ontology	<a href="#">Hyperlink</a>
Gene Summary	The protein encoded by this gene is a member of the calcium-binding protein family. The specific function of this protein has not yet been determined; however this protein is known to interact with DNA-dependent protein kinase and may play a role in kinase-phosphatase regulation of DNA end joining. This protein also interacts with integrin alpha(IIb)beta(3), which may implicate this protein as a regulatory molecule for alpha(IIb)beta(3). [provided by RefSeq]
Other Designations	DNA-dependent protein kinase interacting protein Snk interacting protein 2-28 calcium and integrin binding 1 calcium and integrin binding protein calcium and integrin binding, protein kinase interacting protein calmyrin

## Publication Reference

- [CIB1 is essential for mouse spermatogenesis.](#)

Yuan W, Leisner TM, McFadden AW, Clark S, Hiller S, Maeda N, O'Brien DA, Parise LV.

Molecular and Cellular Biology 2006 Nov; 26(22):8507.

Application: WB, Mouse, MEFs, Testis

- [CIB1 is an endogenous inhibitor of agonist-induced integrin alphabeta3 activation.](#)

Yuan W, Leisner TM, McFadden AW, Wang Z, Larson MK, Clark S, Boudignon-Proudron C, Lam SC, Parise LV.

The Journal of Cell Biology 2006 Jan; 172(2):169.

Application: IF, IP, WB-Tr, Human, Megakaryocytes, Platelets, Recombinant protein

## Disease

- [Cardiovascular Diseases](#)
- [Diabetes Mellitus](#)
- [Edema](#)