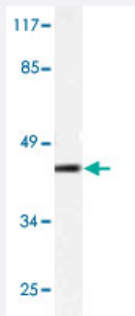


# ACTB Monoclonal antibody, clone M01

Catalog # MAB11127      Size 100 uL

## Applications



### Western Blot (Cell lysate)

Western blot analysis of HeLa cell lysate with ACTB Monoclonal antibody, clone M01 (Cat # MAB11127).

## Specification

<b>Product Description</b>	Mouse monoclonal antibody raised against synthetic peptide of ACTB.
<b>Immunogen</b>	A synthetic peptide corresponding to ACTB.
<b>Host</b>	Mouse
<b>Theoretical MW (kDa)</b>	45
<b>Reactivity</b>	Human, Mouse, Rat
<b>Specificity</b>	ACTB Monoclonal antibody detects endogenous levels of ACTB protein.
<b>Form</b>	Liquid
<b>Purification</b>	Antigen affinity purification
<b>Concentration</b>	1 mg/mL
<b>Recommend Usage</b>	Western Blot (1:2000-1:5000) The optimal working dilution should be determined by the end user.
<b>Storage Buffer</b>	In PBS, pH 7.2 (0.05% sodium azide)

**Storage Instruction**

Store at 4°C. For long term storage store at -20°C.  
Aliquot to avoid repeated freezing and thawing.

**Note**

This product contains sodium azide: a POISONOUS AND HAZARDOUS SUBSTANCE which should be handled by trained staff only.

## Applications

- Western Blot (Cell lysate)

Western blot analysis of HeLa cell lysate with ACTB Monoclonal antibody, clone M01 (Cat # MAB11127).

## Gene Info — ACTB

**Entrez GeneID**[60](#)**Gene Name**

ACTB

**Gene Alias**

PS1TP5BP1

**Gene Description**

actin, beta

**Omim ID**[102630](#)**Gene Ontology**[Hyperlink](#)**Gene Summary**

This gene encodes one of six different actin proteins. Actins are highly conserved proteins that are involved in cell motility, structure, and integrity. This actin is a major constituent of the contractile apparatus and one of the two nonmuscle cytoskeletal actins. [provided by RefSeq]

**Other Designations**

PS1TP5-binding protein 1|actin, cytoplasmic 1|beta actin|beta cytoskeletal actin

## Pathway

- [Adherens junction](#)
- [Arrhythmogenic right ventricular cardiomyopathy \(ARVC\)](#)
- [Focal adhesion](#)
- [Hypertrophic cardiomyopathy \(HCM\)](#)
- [Leukocyte transendothelial migration](#)
- [Pathogenic Escherichia coli infection - EHEC](#)

- [Regulation of actin cytoskeleton](#)
- [Tight junction](#)
- [Vibrio cholerae infection](#)

## Disease

- [Breast cancer](#)
- [Breast Neoplasms](#)