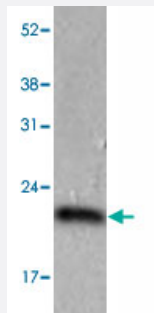


PPIC monoclonal antibody, clone AT3C6

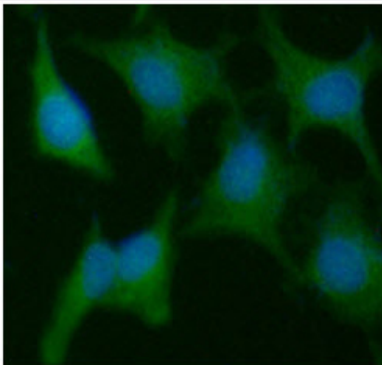
Catalog # MAB11113 Size 100 uL

Applications



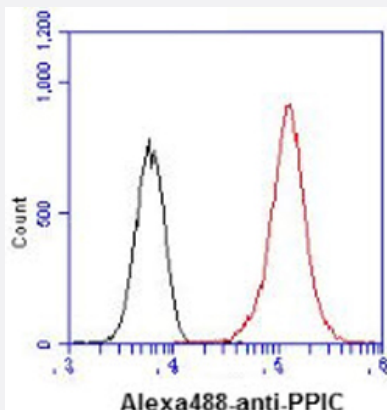
Western Blot (Cell lysate)

The HeLa (40 ug) were resolved by SDS-PAGE, transferred to PVDF membrane and probed with PPIC monoclonal antibody, clone AT3C6 (Cat # MAB11113) (1:1000). Proteins were visualized using a goat anti-mouse secondary antibody conjugated to HRP and an ECL detection system.



Immunofluorescence

Immunofluorescence analysis of PPIC in HeLa cells. The cell was stained with PPIC monoclonal antibody, clone AT3C6 (Cat # MAB11113) (1:100). The secondary antibody (green) was used Alexa Fluor 488. DAPI was stained the cell nucleus (blue).



Flow Cytometry

Flow cytometry analysis of PPIC in HeLa cell line, staining at 2-5 ug for 1x10⁶ cells (red line). The secondary antibody used goat anti-mouse IgG Alexa fluor 488 conjugate. Isotype control antibody was mouse IgG (black line).

Specification

Product Description	Mouse monoclonal antibody raised against partial recombinant PPIC.
Immunogen	Recombinant protein corresponding to amino acids 39-197 of human PPIC.
Host	Mouse
Reactivity	Human
Form	Liquid
Purification	Protein G purification
Concentration	1 mg/mL
Isotype	IgG2b, kappa
Recommend Usage	ELISA Flow Cytometry Immunocytochemistry Immunofluorescence Western Blot The optimal working dilution should be determined by the end user.
Storage Buffer	In PBS, pH 7.4 (10% glycerol, 0.02% sodium azide).
Storage Instruction	Store at 2°C to 8°C for 1 week. For long term storage, aliquot and store at -20°C to -80°C. Aliquot to avoid repeated freezing and thawing.
Note	This product contains sodium azide: a POISONOUS AND HAZARDOUS SUBSTANCE which should be handled by trained staff only.

Applications

- Western Blot (Cell lysate)

The HeLa (40 ug) were resolved by SDS-PAGE, transferred to PVDF membrane and probed with PPIC monoclonal antibody, clone AT3C6 (Cat # MAB11113) (1:1000). Proteins were visualized using a goat anti-mouse secondary antibody conjugated to HRP and an ECL detection system.

- Immunocytochemistry

- Immunofluorescence

Immunofluorescence analysis of PPIC in HeLa cells. The cell was stained with PPIC monoclonal antibody, clone AT3C6 (Cat # MAB11113) (1:100). The secondary antibody (green) was used Alexa Fluor 488. DAPI was stained the cell nucleus (blue).

- Enzyme-linked Immunoabsorbent Assay

- Flow Cytometry

Flow cytometry analysis of PPIC in HeLa cell line, staining at 2-5 ug for 1×10^6 cells (red line). The secondary antibody used goat anti-mouse IgG Alexa fluor 488 conjugate. Isotype control antibody was mouse IgG (black line).

Gene Info — PPIC

Entrez GeneID	5480
Protein Accession#	NP_000934
Gene Name	PPIC
Gene Alias	CYPC, MGC3673
Gene Description	peptidylprolyl isomerase C (cyclophilin C)
Omim ID	123842
Gene Ontology	Hyperlink
Gene Summary	The protein encoded by this gene is a member of the peptidyl-prolyl cis-trans isomerase (PPlase) family. PPlases catalyze the cis-trans isomerization of proline imidic peptide bonds in oligopeptides and accelerate the folding of proteins. Similar to other PPlases, this protein can bind immunosuppressant cyclosporin A. [provided by RefSeq]
Other Designations	PPlase C cyclophilin C parvulin peptidyl-prolyl cis-trans isomerase C peptidylprolyl isomerase C rotamase C