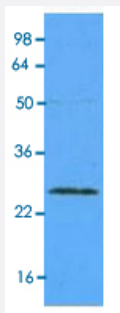


RAB5A monoclonal antibody, clone 3A4

Catalog # MAB1109

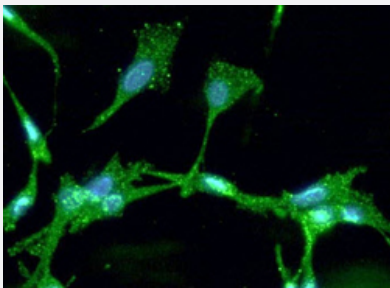
Size 100 uL

Applications



Western Blot (Tissue lysate)

Western blot analysis of mouse brain tissue lysate.



Immunofluorescence

Immunofluorescence analysis of U87 MG cells. The cell was stained with RAB5A monoclonal antibody, clone 3A4 (1:100). The secondary antibody (green) was used Alexa Fluor 488. DAPI was stained the cell nucleus (blue).

Specification

Product Description	Mouse monoclonal antibody raised against full length recombinant RAB5A.
Immunogen	Recombinant protein corresponding to full length human RAB5A.
Host	Mouse
Reactivity	Human, Mouse
Form	Liquid
Purification	Protein G purification
Isotype	IgG2b, kappa

Recommend Usage	ELISA Immunocytochemistry Immunofluorescence Western Blot The optimal working dilution should be determined by the end user.
Storage Buffer	In PBS, pH 7.4 (10% glycerol, 0.02% sodium azide).
Storage Instruction	Store at 2°C to 8°C for 1 week. For long term storage, aliquot and store at -20°C to -80°C. Aliquot to avoid repeated freezing and thawing.
Note	This product contains sodium azide: a POISONOUS AND HAZARDOUS SUBSTANCE which should be handled by trained staff only.

Applications

- Western Blot (Tissue lysate)

Western blot analysis of mouse brain tissue lysate.

- Immunocytochemistry

- Immunofluorescence

Immunofluorescence analysis of U87 MG cells. The cell was stained with RAB5A monoclonal antibody, clone 3A4 (1:100). The secondary antibody (green) was used Alexa Fluor 488. DAPI was stained the cell nucleus (blue).

- Enzyme-linked Immunoabsorbent Assay

Gene Info — RAB5A

Entrez GeneID	5868
GeneBank Accession#	NM_004162
Protein Accession#	NP_004153
Gene Name	RAB5A
Gene Alias	RAB5
Gene Description	RAB5A, member RAS oncogene family
Omim ID	179512
Gene Ontology	Hyperlink

Gene Summary

O

Other Designations

RAS-associated protein RAB5A

Publication Reference

- [Editorial: Retinol binding protein 4 and pathogenesis of diabetes.](#)

McTernan PG, Kumar S.

The Journal of Clinical Endocrinology and Metabolism 2007 Jul; 92(7):2430.

- [Retinol binding protein 4 expression in humans: relationship to insulin resistance, inflammation, and response to pioglitazone.](#)

Yao-Borengasser A, Varma V, Bodles AM, Rasouli N, Phanavanh B, Lee MJ, Starks T, Kern LM, Spencer HJ 3rd, Rashidi AA, McGehee RE Jr, Fried SK, Kern PA.

The Journal of Clinical Endocrinology and Metabolism 2007 Jul; 92(7):2590.

Pathway

- [Amyotrophic lateral sclerosis \(ALS\)](#)
- [Endocytosis](#)

Disease

- [Cardiovascular Diseases](#)
- [Diabetes Mellitus](#)
- [Edema](#)