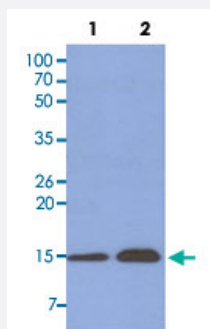


# ISG15 monoclonal antibody, clone 3E5

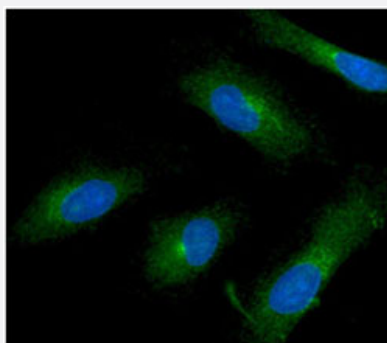
Catalog # MAB1090      Size 100 uL

## Applications



### Western Blot (Cell lysate)

Western blot analysis of Lane 1: HeLa cell lysate; Lane 2: MCF7 cell lysate.



### Immunofluorescence

Immunofluorescence analysis of HeLa cells. The cell was stained with ISG15 monoclonal antibody, clone 3E5 (1:100). The secondary antibody (green) was used Alexa Fluor 488. DAPI was stained the cell nucleus (blue).

## Specification

<b>Product Description</b>	Mouse monoclonal antibody raised against partial recombinant ISG15.
<b>Immunogen</b>	Recombinant protein corresponding to amino acids 1-157 of human ISG15.
<b>Host</b>	Mouse
<b>Reactivity</b>	Human
<b>Form</b>	Liquid
<b>Purification</b>	Protein A purification

Isotype	IgG1, kappa
Recommend Usage	ELISA Immunocytochemistry Immunofluorescence Western Blot The optimal working dilution should be determined by the end user.
Storage Buffer	In PBS, pH 7.4 (10% glycerol, 0.02% sodium azide).
Storage Instruction	Store at 2°C to 8°C for 1 week. For long term storage, aliquot and store at -20°C to -80°C. Aliquot to avoid repeated freezing and thawing.
Note	This product contains sodium azide: a POISONOUS AND HAZARDOUS SUBSTANCE which should be handled by trained staff only.

## Applications

- Western Blot (Cell lysate)

Western blot analysis of Lane 1: HeLa cell lysate; Lane 2: MCF7 cell lysate.

- Immunocytochemistry

- Immunofluorescence

Immunofluorescence analysis of HeLa cells. The cell was stained with ISG15 monoclonal antibody, clone 3E5 (1:100). The secondary antibody (green) was used Alexa Fluor 488. DAPI was stained the cell nucleus (blue).

- Enzyme-linked Immunoabsorbent Assay

## Gene Info — ISG15

Entrez GeneID	<a href="#">9636</a>
GeneBank Accession#	<a href="#">NM_005101</a>
Protein Accession#	<a href="#">NP_005092</a>
Gene Name	ISG15
Gene Alias	G1P2, IFI15, UCRP
Gene Description	ISG15 ubiquitin-like modifier
Omim ID	<a href="#">147571</a>

## Gene Ontology

[Hyperlink](#)

## Gene Summary

ISG15 is a ubiquitin-like protein that becomes conjugated to many cellular proteins upon activation by interferon-alpha (IFNA; MIM 147660) and -beta (IFNB; MIM 147640) (Zhao et al., 2005 [PubMed 16009940]).[supplied by OMIM]

## Other Designations

OTTHUMP00000038464|interferon, alpha-inducible protein (clone IFI-15K)|interferon-induced 17-kDa/15-kDa protein|interferon-stimulated protein, 15 kDa|ubiquitin cross-reactive protein

## Disease

- [Cardiovascular Diseases](#)
- [Diabetes Mellitus](#)
- [Edema](#)
- [Genetic Predisposition to Disease](#)
- [Osteoporosis](#)
- [Ovarian Neoplasms](#)
- [Respiratory Syncytial Virus Infections](#)