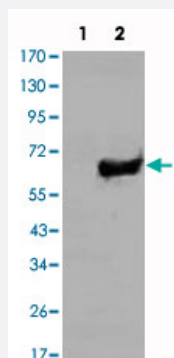


SOX2 monoclonal antibody, clone 10F10

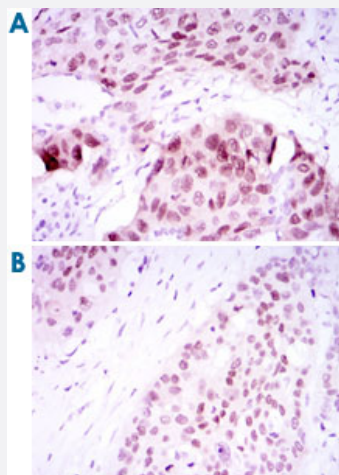
Catalog # MAB10845 Size 100 uL

Applications



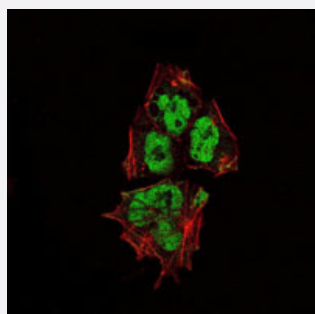
Western Blot (Transfected lysate)

Western blot analysis using SOX2 monoclonal antibody, clone 10F10 (Cat # MAB10845) against HEK293 (1) and SOX2-hlgGfC transfected HEK293 (2) cell lysate.



Immunohistochemistry (Formalin/PFA-fixed paraffin-embedded sections)

Immunohistochemical analysis of paraffin-embedded human lung cancer tissues (A) and esophageal cancer tissues (B) using SOX2 monoclonal antibody, clone 10F10 (Cat # MAB10845) with DAB staining.



Immunofluorescence

Immunofluorescence analysis of NTERA-2 cells using SOX2 monoclonal antibody, clone 10F10 (Cat # MAB10845) (green). Red: Actin filaments have been labeled with Alexa Fluor-555 phalloidin.

Specification

| | |
|---------------------|--|
| Product Description | Mouse monoclonal antibody raised against partial recombinant SOX2. |
| Immunogen | Recombinant protein corresponding to human SOX2. |
| Host | Mouse |
| Reactivity | Human |
| Form | Liquid |
| Isotype | IgG1 |
| Recommend Usage | ELISA (1:10000) Western Blot (1:500-1:2000) Immunohistochemistry (1:200-1:1000) Immunofluorescence (1:200-1:1000) The optimal working dilution should be determined by the end user. |
| Storage Buffer | In ascites (0.03% sodium azide) |
| Storage Instruction | Store at 4°C. For long term storage store at -20°C. Aliquot to avoid repeated freezing and thawing. |
| Note | This product contains sodium azide: a POISONOUS AND HAZARDOUS SUBSTANCE which should be handled by trained staff only. |

Applications

- Western Blot (Transfected lysate)

Western blot analysis using SOX2 monoclonal antibody, clone 10F10 (Cat # MAB10845) against HEK293 (1) and SOX2-hlgGfc transfected HEK293 (2) cell lysate.

- Immunohistochemistry (Formalin/PFA-fixed paraffin-embedded sections)

Immunohistochemical analysis of paraffin-embedded human lung cancer tissues (A) and esophageal cancer tissues (B) using SOX2 monoclonal antibody, clone 10F10 (Cat # MAB10845) with DAB staining.

- Immunofluorescence

Immunofluorescence analysis of NTERA-2 cells using SOX2 monoclonal antibody, clone 10F10 (Cat # MAB10845) (green).
Red: Actin filaments have been labeled with Alexa Fluor-555 phalloidin.

- Enzyme-linked Immunoabsorbent Assay

Gene Info — SOX2

| | |
|--------------------|--|
| Entrez GeneID | 6657 |
| Gene Name | SOX2 |
| Gene Alias | ANOP3, MCOPS3, MGC2413 |
| Gene Description | SRY (sex determining region Y)-box 2 |
| Omim ID | 184429 206900 |
| Gene Ontology | Hyperlink |
| Gene Summary | This intronless gene encodes a member of the SRY-related HMG-box (SOX) family of transcription factors involved in the regulation of embryonic development and in the determination of cell fate. The product of this gene is required for stem-cell maintenance in the central nervous system, and also regulates gene expression in the stomach. Mutations in this gene have been associated with optic nerve hypoplasia and with syndromic microphthalmia, a severe form of structural eye malformation. This gene lies within an intron of another gene called SOX2 overlapping transcript (SOX2 OT). [provided by RefSeq] |
| Other Designations | SRY-related HMG-box gene 2 sex-determining region Y-box 2 transcription factor SOX2 |

Disease

- [Anophthalmos](#)
- [Coloboma](#)
- [Diabetes Mellitus](#)
- [Diabetic Nephropathies](#)
- [Genetic Predisposition to Disease](#)
- [Kidney Failure](#)
- [Microphthalmos](#)
- [Myopia](#)