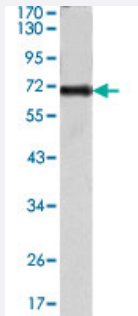


PTK2 monoclonal antibody, clone 10H7E9

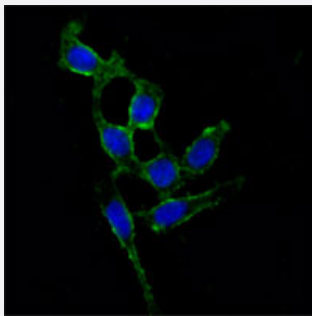
Catalog # MAB10841 Size 100 uL

Applications



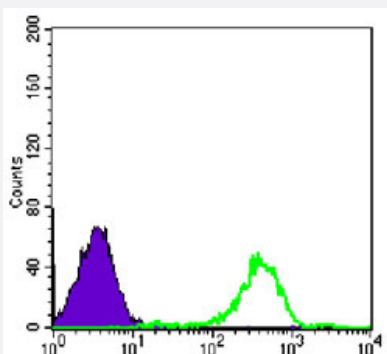
Western Blot (Transfected lysate)

Western blot analysis using PTK2 monoclonal antibody, clone 10H7E9 (Cat # MAB10841) against PTK2-hlgGfc transfected HEK293 cell lysate.



Immunofluorescence

Immunofluorescence analysis of A-549 cells using PTK2 monoclonal antibody, clone 10H7E9 (Cat # MAB10841) (green). Blue: DRAQ5 fluorescent DNA dye.



Flow Cytometry

Flow cytometric analysis of Raji cells using PTK2 monoclonal antibody, clone 10H7E9 (Cat # MAB10841) (green) and negative control (purple).

Specification

Product Description

Mouse monoclonal antibody raised against partial recombinant PTK2.

Immunogen	Recombinant protein corresponding to human PTK2.
Host	Mouse
Reactivity	Human
Form	Liquid
Isotype	IgG1
Recommend Usage	ELISA (1:10000) Western Blot (1:500-1:2000) Immunofluorescence (1:200-1:1000) Flow cytometry (1:200-1:400) The optimal working dilution should be determined by the end user.
Storage Buffer	In ascites (0.03% sodium azide)
Storage Instruction	Store at 4°C. For long term storage store at -20°C. Aliquot to avoid repeated freezing and thawing.
Note	This product contains sodium azide: a POISONOUS AND HAZARDOUS SUBSTANCE which should be handled by trained staff only.

Applications

- Western Blot (Transfected lysate)

Western blot analysis using PTK2 monoclonal antibody, clone 10H7E9 (Cat # MAB10841) against PTK2-hlgGfc transfected HEK293 cell lysate.

- Immunofluorescence

Immunofluorescence analysis of A-549 cells using PTK2 monoclonal antibody, clone 10H7E9 (Cat # MAB10841) (green). Blue: DRAQ5 fluorescent DNA dye.

- Enzyme-linked Immunoabsorbent Assay

- Flow Cytometry

Flow cytometric analysis of Raji cells using PTK2 monoclonal antibody, clone 10H7E9 (Cat # MAB10841) (green) and negative control (purple).

Gene Info — PTK2

Entrez GeneID

[5747](#)

Gene Name	PTK2
Gene Alias	FADK, FAK, FAK1, pp125FAK
Gene Description	PTK2 protein tyrosine kinase 2
Omim ID	600758
Gene Ontology	Hyperlink
Gene Summary	This gene encodes a cytoplasmic protein tyrosine kinase which is found concentrated in the focal adhesions that form between cells growing in the presence of extracellular matrix constituents. The encoded protein is a member of the FAK subfamily of protein tyrosine kinases but lacks significant sequence similarity to kinases from other subfamilies. Activation of this gene may be an important early step in cell growth and intracellular signal transduction pathways triggered in response to certain neural peptides or to cell interactions with the extracellular matrix. At least four transcript variants encoding four different isoforms have been found for this gene, but the full-length nature of only two of them have been determined. [provided by RefSeq]
Other Designations	focal adhesion kinase 1

Pathway

- [Axon guidance](#)
- [Chemokine signaling pathway](#)
- [ErbB signaling pathway](#)
- [Focal adhesion](#)
- [Leukocyte transendothelial migration](#)
- [Pathways in cancer](#)
- [Regulation of actin cytoskeleton](#)
- [Small cell lung cancer](#)
- [VEGF signaling pathway](#)

Disease

- [Autistic Disorder](#)
- [Genetic Predisposition to Disease](#)

- [HIV Infections](#)
- [Leukemia](#)
- [Mental Retardation](#)
- [Neovascularization](#)
- [Psychotic Disorders](#)
- [Schizophrenia](#)