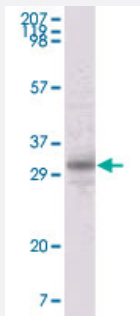


ORF26 monoclonal antibody, clone 2F6B8

Catalog # MAB10839 Size 100 uL

Applications



Western Blot (Cell lysate)

Western blot analysis using ORF26 monoclonal antibody, clone 2F6B8 (Cat # MAB10839) against TPA induced BCBL-1 cell lysate.

Specification

Product Description	Mouse monoclonal antibody raised against partial recombinant ORF26.
Immunogen	Recombinant protein corresponding to ORF26 (human herpesvirus 8).
Host	Mouse
Reactivity	Human
Form	Liquid
Isotype	IgG1
Recommend Usage	ELISA (1:10000) Western Blot (1:500-1:2000) The optimal working dilution should be determined by the end user.
Storage Buffer	In ascites (0.03% sodium azide)
Storage Instruction	Store at 4°C. For long term storage store at -20°C. Aliquot to avoid repeated freezing and thawing.
Note	This product contains sodium azide: a POISONOUS AND HAZARDOUS SUBSTANCE which should be handled by trained staff only.

Applications

- Western Blot (Cell lysate)

Western blot analysis using ORF26 monoclonal antibody, clone 2F6B8 (Cat # MAB10839) against TPA induced BCBL-1 cell lysate.

- Enzyme-linked Immunoabsorbent Assay

Gene Info — ORF26

Entrez GeneID	4961509
---------------	-------------------------

Gene Name	ORF26
-----------	-------

Gene Alias	-
------------	---

Gene Description	capsid triplex protein
------------------	------------------------

Gene Ontology	Hyperlink
---------------	---------------------------

Other Designations	-
--------------------	---